

Learn Achieve Aspire

Secondary Schools in Camden 2025



Camden schools:
Bright futures



**Applying for a secondary school
place for September 2025**



Closing date for applications is 31 October 2024



Contents

1	Welcome
4	Camden secondary schools and their locations
5	Open events 2024 and key dates 2024/2025
7	Applying online
8	Applying for a secondary school place
11	Guidance on completing the application form including: address, fraudulent applications, medical and social reasons and supplementary forms
12	Secondary admissions for students with special educational needs
12	In-year admissions, Camden's fair access protocol
13	Myth-busters
14	Admissions criteria
14	Community schools
17	Camden School for Girls
18	La Sainte Union Catholic School
19	Maria Fidelis School FCJ
20	William Ellis School and UCL Academy
21	Post-16 in Camden and LaSWAP Sixth Form admissions criteria

22	Camden secondary schools
22	Acland Burghley School
25	Camden School for Girls
28	Hampstead School
31	Haverstock School
34	La Sainte Union Catholic School
37	Maria Fidelis School FCJ
40	Parliament Hill School
43	Regent High School
46	UCL Academy
49	William Ellis School

52	Allocation of places in 2023 and 2024
53	Other local authority contact details
54	Frequently asked questions
56	List of educational terms and 14–19 education

Camden schools – bright futures



Camden schools:
Bright futures

Dear parents and carers,

We are proud of Camden's secondary schools, which are high achieving and ambitious for all students. Like Camden itself, our schools are vibrant and diverse, offering a tremendous range of opportunities to help prepare their students for successful futures. We believe there is nowhere else in London where young people can receive such an excellent, individual education, with a curriculum and approach which is creative, diverse and inclusive.

This is because each of our secondary schools offers a unique combination of high quality teaching, a prime location in the heart of London and valuable partnerships with world-class businesses, academic institutions and cultural organisations.

This booklet gives you an overview of Camden's secondary schools, highlighting the excellent education they offer and their unique individual strengths.

It also gives you an introduction to the superb range of extracurricular activities on offer across Camden that will help your child to learn, achieve and aspire.

The booklet is primarily aimed at families of children transferring from primary to secondary school in September 2025 and it explains how to apply. There is also information for those considering a transfer between schools, as well as details on each of our secondary schools on pages 22 to 51.



Tim Aldridge
Executive Director,
Children and Learning,
Camden Council



Councillor Marcus Boyland
Cabinet Member for Best Start for
Children and Families,
Camden Council

Camden schools – bright futures

We are proud of the education we offer in Camden.

- Camden secondary schools are high achieving and ambitious for all students
- Camden Borough GCSE results continued to be above the national average in 2023
- All of our schools offer the full National Curriculum plus other areas of study
- Every Camden school offers a supportive approach to pupil wellbeing, including pastoral teams to ensure that children feel safe, happy and ready to learn
- Our secondary schools are committed to creative and vocational learning, with our unique Camden STEAM offer (science, technology, engineering, arts and maths).

Turn to page 3 for more information about the unique opportunities available to all Camden students. As well as reading this guide, we recommend that you:

- Contact the schools for their prospectuses or look at their websites, and visit them on their open days and evenings (dates and times, page 5). You will be able to meet the headteacher, speak to members of staff and students and get a feel for the school's working environment and ethos
- Come to a Meet the Parents forum – see www.meettheparents.info for details
- Talk to your child's primary school headteacher
- Plan a possible journey to school at tfl.gov.uk
- Visit www.gov.uk/dfe (click 'school and college performance data' link)
- Go to ofsted.gov.uk for the latest Ofsted reports
- Visit parentview.ofsted.gov.uk to see how other parents rate the school.

Camden secondary schools have strong links with our excellent primary schools, recognised by Ofsted as among the best in the country overall. As part of this relationship, they will be visiting primary pupils and parents in the autumn term and your child's headteacher will have more details of these sessions.

If you do not live in the borough but would like your child to attend a Camden school, please contact your home local authority's admissions team for details of the admissions process.

Camden school places are popular so please make sure your application is completed properly and on time. The deadline to apply for places for September next year is **31 October 2024**. If you have any questions, please contact your child's primary headteacher or the council's admissions team by emailing admissions@camden.gov.uk. You can also call them on **020 7974 1625** or visit our website at camden.gov.uk/admissions.

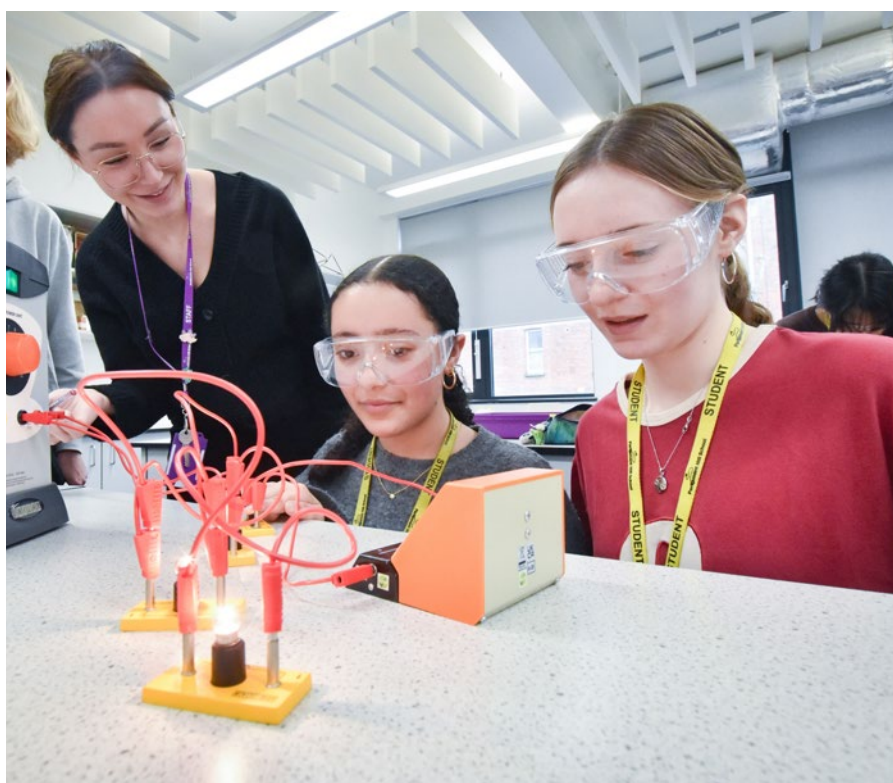
We are confident that whichever Camden secondary school you decide is best for your child you will be delighted with the progress they make, the opportunities they enjoy, the quality of education they receive and the successes they achieve.

Building Back Stronger - Camden's Education Strategy to 2030

We have seized a once-in-a-generation opportunity to refresh our ambitions for our education system in Camden, based on the twin pillars of equity and excellence.

We believe that a system which is better for disadvantaged children is better for everyone.

We're determined to create a more inclusive education system, which will remove the barriers limiting participation and achievement, respect diverse needs, abilities and characteristics and eliminate discrimination.



Camden secondary schools – learn, achieve, aspire

Camden has 10 secondary schools, all individual in their ethos and values but each committed to providing the highest standards of education for young people.

The borough offers three types of schools: community, voluntary aided schools – including two Roman Catholic schools – and an academy. We have four single sex schools – including three girls' schools and one boys' school – and six mixed-sex schools.

Each of the Camden secondary schools also offer excellent Sixth Form provision, to give young people the best possible preparation for university, apprenticeships or work. More details can be found throughout this booklet and on page 21.

Some of our schools are oversubscribed so it is important that you use as many of your six preferences as possible.

Please see the schools' pages for detailed information on each of our schools (pages 22 to 51). More information about each school – including exam results, Ofsted reports, dress code or uniform costs – is available from the individual schools and the DfE and Ofsted websites (gov.uk/df and ofsted.gov.uk).

For information about schools in other boroughs, please contact the relevant local authority for their secondary transfer booklet or the schools directly. The contact details of other local authorities are on page 53.



Camden – a borough of unique opportunities for all students

- The partnership between Camden's Sixth Forms and Cambridge University helps boost student entries to top universities
- Strengthened links with local prestigious universities and many other local world-class institutions, including Central Saint Martins, University of the Arts London, the British Museum, the British Library and the Francis Crick Institute, enriches the education provision for Camden secondary students
- Excellent range of arts, sports, other extracurricular and career-related opportunities, including the Duke of Edinburgh's Award and exciting work placements with leading central London companies
- A Google-supported AI campus is due to open for Camden students in autumn 2024
- Camden Music Service organises instrumental and vocal tuition in most Camden schools plus borough

ensembles, choirs, two Saturday music centres and an instrument hire and purchase scheme for parents. Visit camden.gov.uk/camdens-music-service

- Spectacular Camden Schools Music Festival held at the Royal Albert Hall every two years, with the next one taking place in 2025 (see photo above)
- First-ever Camden Schools Art Biennale Exhibition held in July 2024 at Central Saint Martins, University of the Arts London, Granary Square. This is due to be held again in 2026.

Camden promotes the best vocational and technical training opportunities for 14 to 19 year-olds, in close partnership with schools, the local Westminster Kingsway further education college and specialist training organisations, as well as offering, supporting and promoting a wide range of apprenticeships – see camden.gov.uk/apprenticeships for more details.

School locations



School name	Map ref	School type	Gender	2025 published admission number
Acland Burghley School	1	Community	Mixed	182 ¹
Camden School for Girls	2	Voluntary Aided	Girls	120
Hampstead School	3	Community	Mixed	210
Haverstock School	4	Community	Mixed	139 ³
La Sainte Union Catholic	5	RC Voluntary Aided	Girls	120
Maria Fidelis School FCJ	6	RC Voluntary Aided	Mixed	150
Parliament Hill School	7	Community	Girls	180
Regent High School	8	Community	Mixed	180
UCL Academy	9	Academy	Mixed	192 ²
William Ellis School	10	Voluntary Aided	Boys	130

¹ Including 4 places in resource base for students with autism ² Including 18 places for students with an aptitude for visual arts

³ Including 4 resource places for students with autism

--- Camden borough boundary

Open events 2024

All Camden secondary schools plan to have open events for parents and the details below were correct at the time of going to print – please check the schools' and Camden Council's website for the most up to date information.

Acland Burghley School

Burghley Road, London NW5 1UJ 020 7485 8515
www.aclandburghley.camden.sch.uk



Open evening: Wednesday 25 September, 5pm
Open mornings: 24, 25 and 26 September, 9am
Sixth Form: Thursday 28 November, 5.30 to 8pm at William Ellis and Parliament Hill Schools (pre-registration is required – see the school website or www.laswap.camden.sch.uk)

Hampstead School

Westbere Road, London NW2 3RT
020 7794 8133
www.hampsteadschool.org.uk



Open evening: Tuesday 8 October, 4.30pm
Open mornings: 17, 24 September, 1, 15, 22, 23 October. Please arrive for 9.15am start
Sixth Form: Tuesday 19 November, 6pm

The UCL Academy

Adelaide Road, London NW3 3AQ 020 7449 3080
www.uclacademy.co.uk



Open evening: Thursday 3 October, 4.30 to 6.30pm
Open mornings: 12, 19 and 26 September, 9 to 10.30am. Please register via the Academy website
Sixth Form: Thursday 7 November, 4.30 to 6.30pm. Please register via the school website

Parliament Hill School

Highgate Road, London NW5 1RL
020 7485 7077
www.parliamenthill.camden.sch.uk



Open evening: Thursday 26 September, 5 to 7.30pm
Open mornings: 1, 2 and 8 October, 9 to 10.30am
Sixth Form: Thursday 28 November, 5.30 to 8pm at William Ellis and Parliament Hill Schools (pre-registration is required – see the school website or www.laswap.camden.sch.uk)

La Sainte Union

Highgate Road, London NW5 1RP 020 7428 4600
www.lasainteunion.org.uk



Open evening: Tuesday 17 September, 4 to 7pm
Open days: 8 and 17 October, 9 to 11am. Please register your place on the school website.
Sixth Form: Thursday 28 November, 5.30 to 8pm at William Ellis and Parliament Hill Schools (pre-registration is required – see the school website or www.laswap.camden.sch.uk)

Camden School for Girls

Sandall Road, London NW5 2DB 020 7485 3414
www.csfg.org.uk



Open evening: Monday 23 September, 5 to 7pm
Open mornings: 18 and 20 September, 9am to 11am
Sixth Form: Tuesday 19 November. Tickets will be available from 1 October. Please check website nearer the time
Banding assessment registration: register online by 24 September, 12 noon

Haverstock School

24 Haverstock Hill, London NW3 2BQ
020 7267 0975
www.haverstock.camden.sch.uk



Open evening: Tuesday 1 October, 5 to 7pm
Please check the school calendar or contact the school for the arrangements of Sixth Form events
Open mornings with tour of classrooms: Drop in any Thursday from 9 to 10am from 27 September to 25 October

Maria Fidelis School FJC

1–39 Drummond Crescent, London NW1 1LY
020 7387 3856
www.mariafidelis.camden.sch.uk



Open evening: Wednesday 25 September, 4 to 6pm
Open mornings: Every Tuesday during term time. Please check our website for more information
Sixth Form: Please check the school website for more information

Regent High School

Chalton Street, London NW1 1RX 020 7387 0126
www.regenthighschool.org.uk



Open mornings: 30 September to 4 October and 7 to 11 October starting at 9am
Sixth Form: Thursday 14 November, 4 to 6pm

William Ellis School

Highgate Road, London NW5 1RN 020 7267 9346
www.williamellis.camden.sch.uk



Open evening: Thursday 26 September, 6 to 8pm
Open mornings: 30 September, 4 and 7 October, 9 to 10.30am
Sixth Form: Thursday 28 November, 5.30 to 8pm at William Ellis and Parliament Hill Schools (pre-registration is required – see the school website or www.laswap.camden.sch.uk)

Local group **Meet the Parents** holds informal forums at local primary schools, where families can 'meet the parents' and students who attend their local secondary schools.
Find out more about these events: meettheparents.info/latest-events

Key dates

2024

August	New admissions booklet published online
1 September	Online applications open at www.eadmissions.org.uk
September/October	Parents and their children visit secondary schools on open days arranged by the individual schools Parents discuss preferences with Camden primary school headteachers
Noon on 24 September	Camden School for Girls deadline to register for the banding assessment test and music aptitude assessment
5pm on 24 September	UCL Academy visual arts supplementary form deadline
4pm on 8 October	William Ellis music place application deadline
25 October	Maria Fidelis supplementary information form deadline
28 October to 1 November	Half-term *
31 October	Final closing date for applications and changes to preferences
31 October	La Sainte Union deadline for parents to complete online supplementary information form (available on the school's website) and provide a copy of their child's baptismal certificate
20 December	End of autumn term*

2025

6 January	First day of spring term
17 to 21 February	Half term*
Monday 3 March	Camden Council informs applicants who live in Camden of the outcome of ALL applications to schools in or outside the borough within the co-ordinated scheme. If you applied online, you will receive an email with the outcome of your application during the evening
17 March	Deadline to accept or decline offer via eadmissions website or reply slip
28 March	Closing date for submitting appeals for Camden community schools. Parents appealing to other local authorities or voluntary aided/foundation schools must check the deadline for submitting appeals with those authorities/schools
7 to 21 April	Spring holiday*
June to July	Appeal hearings for Camden community schools
September	Children start secondary school

* Some Camden schools have different term dates. Please check the relevant school website for further information.

Applying online

From September 2024, parents of children living in Camden can apply online for their child to transfer from Year 6 to secondary school in 2025 at:

www.eadmissions.org.uk

This online form is only for children born between 1 September 2013 to 31 August 2014.

We strongly advise parents to apply for a school place online. If you have problems with this, please talk to your primary school or email admissions@camden.gov.uk.

What are the advantages?

- Safe, quick and easy
- Allows you to change your information online rather than using a new form
- You can check and change your application at any point until the closing date
- A drop-down schools list helps to minimise errors and saves you time
- You can print out a paper copy of your application if you need it for reference
- A password protected system gives you guaranteed confidentiality and privacy
- Your forms will not get lost in the post
- You can easily log on at home, work, a café with Wi-Fi or at a library.

Using the internet at a Camden library is free; prior booking is recommended.

What is the deadline?

The deadline for online applications is 11:59pm on **Thursday 31 October 2024**.

How will I know if my online application has been received?

You will be sent an email confirmation and application reference number similar to this:

202-2025-09-E-001234

Please keep your reference number and login details safe, by writing them in the box below.

When will I know the outcome of my online application?

During the evening of **Monday 3 March 2025**, you will be sent an email with the outcome of your application. For those parents or guardians who have not applied online, a letter with the outcome of your application will be posted by first class mail on **3 March 2025**.

For online admissions

USER NAME/EMAIL:

PASSWORD:

REFERENCE NUMBER:



Applying for a secondary school place

How does the admissions system work?

The pan-London co-ordinated admissions scheme was developed by all London boroughs, together with six councils which border the capital, to improve the way that secondary transfer is administered, and to make the process fairer and simpler. The co-ordinated system has allowed more parents to receive an offer at one of their preferred schools and resulted in fewer parents with no offer at all. Please note that although designed to be a fairer system, there is no guarantee that you will be offered a place at one of the schools you apply for.

Wherever you live, you may apply for a place at a state school in any London borough or other area. Most people apply online (see page 7) but if you are not doing so you must apply to the borough you live in. You can express preferences for schools in other London boroughs via the admissions online system. When applying to a school in another borough, you must check the admission arrangements with the appropriate school or local authority admissions team.

Please note that private (independent) schools are not included in these arrangements. Therefore, applications for private schools must be made directly to the school.

Who can apply?

Children transferring from primary to secondary school in September 2025 can apply if they are born between 1 September 2013 and 31 August 2014, and currently in Year 6. If your child is in the last year of primary school, but their birthday does not fall between these dates, please contact the Camden admissions team by emailing admissions@camden.gov.uk or calling 020 7974 1625.

How do I apply?

We strongly recommend parents apply online (see page 7). If you are unable to do so please talk to your primary school or email admissions@camden.gov.uk.

Your application must be made to the local authority where your family are residing by **Thursday 31 October 2024**.

You can name up to six schools that must be listed in your preference order on the application. We strongly advise parents to use all six preferences to increase their chance of being offered a school of their choice. If only one school is listed, it does not increase your chances of being offered a place at that school.

Schools will not be told your order of preference, or details of other schools you have listed on your application.

What to consider when making an application

Be realistic about the chances of your application being successful and consider the following to increase your chances of being offered a school of your choice:

- Look carefully at the published admissions criteria for any oversubscribed school
- The admissions criteria for Camden community schools is set by Camden Council (pages 14 to 16)
- The admissions criteria for voluntary aided schools and UCL Academy are decided by their governing bodies (pages 17 to 20)
- Think carefully about your preference order – if eligible to be offered a place at more than one school, your child will be offered their highest preference school, if a place is available there – all lower preferences will be released

- Your child's name will automatically be placed on a waiting list for any higher preference school(s) than the school offered.

What is the distance admissions criteria?

There are no catchment areas for Camden community secondary schools and none have feeder primary schools. So, just because your child attends a particular primary school, it does not mean that he or she will automatically be given a place at a particular secondary school.

Most families when applying for an oversubscribed Camden community secondary school will be considered under the distance criteria if there are no special factors or siblings at those schools.

Find out more about the distance criterion:

- See the flow chart on page 16, which will help you decide whether your application will be considered under the distance criterion
- Our website at schoolsearch.camden.gov.uk/schools will help you find your nearest secondary schools and the approximate distances from your home
- The table on page 52 will help you compare your distance from a school with those of students who were offered a place in previous years. These distances are for guidance only and can change each year.

How are places allocated?

The pan-London co-ordinated admissions scheme electronically exchanges information about Camden applicants who apply for schools outside this borough and parents living outside this borough who list Camden schools among their preferences.

The admissions authority for each school will consider all applications for their school at the same time. If a school receives more applications than places available, then the admissions authority for that school will assess each applicant under its published admission criteria to determine which students will be offered places.

Think carefully about your preference order (see 'what to consider when making an application', page 8).

When will I know?

Parents who apply online will receive an email during the evening of **Monday 3 March 2025** with the outcome of their application. Letters will be posted by first class mail on **Monday 3 March 2025** to parents who submit a paper application. If you do not receive notification, please contact the Camden admissions team on **020 7974 1625** as soon as possible or email admissions@camden.gov.uk.

Parents will be asked to respond via the eadmissions system or post to confirm whether they accept or decline their offer by **Monday 17 March 2025**. If parents do not respond, it could result in the offer being withdrawn and the place being offered to the next child on the waiting list. Similarly, if a place is offered and accepted but the child does not start school within two weeks following the start of term, the place may be offered to another child.



What if my application is late or I change my preferences?

Changes to preferences and the order of the preferences will only be accepted up until the closing date of **Thursday 31 October 2024**. Changes to preferences after this date will not be considered until after the offer day on **Monday 3 March 2025**, which means that there may not be places remaining at your preferred school. Applications received after the closing date of **Thursday 31 October 2024** will only be considered if there are exceptional reasons why the applicant could not apply on time.

Reasons for late applications must be included in writing with the application, enclosing any appropriate supporting information. Late applications will be agreed at the discretion of the Head of Education Commissioning and School Organisation.

Waiting lists

Your child's name will automatically be placed on a waiting list for any higher preference school(s) than the school offered. Your child's name will not be placed on any waiting list for a lower preference where he or she has been offered a place at a higher preference school.

Waiting lists are not operated on a first come first served basis. Your place on the waiting list, and whether a place is offered if another child drops out, is determined by the school's admissions criteria. The waiting list does not take account of the parents' order of preference because 'preference' is not part of the admission criteria.

Waiting lists are revised every time relevant factors relating to any applicant changes and it is possible for applicants to go down as well as up the list. A place on the waiting list is not a guarantee of a place in the school. Equally, the length of time spent on a waiting list does not affect your place on the list.

All late applications are placed on the waiting list at the appropriate place once offers have been made on **Monday 3 March 2025**.

Applying for a secondary school place (continued)

Does it matter what order I list my school preferences?

Example 1: A parent ranks a local school as their highest preference and is offered a place there. The child will not be put on the waiting list for any of the other schools in the co-ordinated scheme that were ranked lower by the parent, as they were offered their highest possible preference.

Example 2: A parent names three preferences on their application and ranks them in the following order:

1. School A
2. School B
3. School C

The parent is offered School B. The child's name will remain on School A's waiting list, as this preference was higher than the offered school but will not be put on School C's waiting list, as this school was listed lower than the offered school.

What happens if my child does not have a school place?

If you are not offered a place at any of your preferred schools, the Camden admissions team will attempt to offer you the nearest Camden school that has a vacancy. Please contact the Camden admissions team (email: admissions@camden.gov.uk; tel: 020 7974 1625) for information about schools which may have vacancies, or short waiting lists and you will be invited to make applications to these schools as soon as possible.

Parents have a legal duty to ensure their children receive full-time education suitable to their age, ability or aptitude. In addition, Camden Council has a legal duty to ensure that all children living within the borough have a secondary school place.

At the beginning of the autumn term the Camden admissions team will pass the names of all the children without a school place to the school inclusion team who will work with parents to ensure their child is receiving an education.

Can I appeal if I don't get the place I want?

You may appeal for a place at any of your preference schools at which you have been refused a place. However, you should accept the place you have been offered, or secure a place at an alternative school with vacancies to ensure you have a place for your child if your appeal is unsuccessful. It is sensible to do this because secondary transfer appeals are normally heard during the second half of the summer term, by which time there will be very few alternative schools with vacancies. Doing this will not affect your right to appeal and, if the appeal committee upholds your appeal, you can then withdraw from the alternative school. The Camden admissions team (email: admissions@camden.gov.uk; tel: 020 7974 1625) will always discuss alternative schools with vacancies at any stage in the process.

For a voluntary aided school within or outside Camden, the school is responsible for appeal arrangements and you should contact them directly for details. For a community school, the local authority in which the school is located is responsible. If you want to appeal for a Camden community school, UCL Academy or William Ellis School, you can use the online form at camden.gov.uk/schoolappeal.

Appeal forms should be submitted online via camden.gov.uk/schoolappeal to committee services by **28 March 2025**.

Appeals submitted after the closing date will be accepted, but there is no guarantee the appeal will be heard before the end of the academic year. For further information on appeals you can contact: Education admissions appeals co-ordinator, Committee Services, Camden Town Hall, Judd Street, WC1H 9JE. Telephone: 020 7974 1914.

Appeals are heard by an independent committee. A decision by an appeal committee whether or not to offer a school place is binding on the admissions authority. If an appeal is successful the school must offer a place to the child concerned. This means that the number of children to be admitted to the school will exceed the published admission number and no further places will be offered until the number of children falls below the school's published admission number. If your appeal for a school is unsuccessful, you may not appeal for the same school within one academic year, unless there has been a material change in circumstances.

Appeal hearings for places at Camden community schools will normally be held in June/July 2025 for secondary transfer. In 2024, nine community school appeals were held (five for Parliament Hill and four for Acland Burghley). Two appeals were successful for Acland Burghley School. If you require appeal information about a Camden voluntary aided school or an academy, please contact the relevant school.

Where can I get help?

If you have any queries regarding these arrangements:

- Please contact Camden admissions team by emailing admissions@camden.gov.uk or calling 020 7974 1625
- Visit in person (please make an appointment): 5 Pancras Square, London N1C 4AG (note: please do not send post here)
- Write to: School admissions team, Camden Town Hall, Judd Street, London WC1H 9JE
- For information on schools in other boroughs, you will need to contact the relevant school or local authority directly. See page 53 for other local authority contact details.

Guidance on completing the application form

Parental responsibility

Applications should be submitted by those with parental responsibility or legal guardianship. If you have any queries about parental responsibility please contact the admission team on 020 7974 1625.

Proof of date of birth

You need to submit proof of your child's date of birth - for example, their NHS medical card or short birth certificate.

Proof of address

You will need to submit a utility bill (gas, electricity or water bill) dated in the last three months and your current Council Tax statement as proof of your address. Camden will also verify the address on your application form using existing council records and credit reference agencies. If your address cannot be verified, Camden admissions team will contact you requesting further evidence, such as a housing benefit letter or tenancy agreement. Failure to produce such evidence may lead to the offer of a place being withdrawn, even if the place has already been accepted. Voluntary aided schools may also request further evidence of address. The address given must be the address where those with parental responsibility or legal guardianship reside with the child, and from where the child goes to school.

The most common reason for the council to request further evidence is because the name of the applicant does not match the name of the person recorded as being at this address. Sometimes this is because people use their maiden name rather than their married name, or spell their name in a different way to usual. Please use the spelling of your name as it appears on official records such as your council tax bill.

Children living at two addresses

Applications can only be based upon one address at which the child usually lives and from where they travel to and from school.

If parents live separately, the application must be based on the address at which the child spends the majority of the school week.

If the child lives equally at two different addresses, it is the parents' responsibility to agree and make it clear which address will be used and to provide supporting evidence in respect of that address. If parents are unable to decide which address will be used for the application the local authority will make the decision.

Once a decision has been made as to which address will be used, for parents who live separately, this will not be amended until the start of the next academic year. If there is a significant change in circumstances, parent/s will need to submit a written case to the admissions team for consideration.

Change of address

Please notify the Camden admissions team immediately if you change your address. We can only accept changes of address once they have taken place. Notice of planned future arrangements will not be accepted under any circumstances. An application will only be considered on the basis of your child's permanent home address at the closing date of **Thursday 31 October 2024**.

A change of address will only be taken into account if it occurs before the closing date of **Thursday 31 October 2024**.

If you move before **Thursday 31 October 2024**, and you notify Camden admissions team in writing with appropriate evidence by this date, your application will be considered on the basis of the new address.

If you move, or inform the Camden admissions team after **Thursday 31 October 2024**, the change of address cannot be taken into account when considering your application and your address will not be amended until after **Monday 3 March 2025**. If you move address after **Thursday 31 October 2024** and are offered a place based on your previous address you will be entitled to retain that place if you wish.

If you move in or out of Camden after **Thursday 31 October 2024** and have completed an application in your previous borough, you will need to contact both councils with details of your new address.

Temporary accommodation

Camden will not accept a temporary address if you still possess a property that was previously used as a home address, or a temporary address used solely or mainly to obtain a school place.

We consider temporary accommodation a place where you have lived for a year or less prior to the closing date of **Thursday 31 October 2024** (including rented, bought or living with a family member or friend). We will also review the application of any family who decides to move after taking up the school place up to a year following the closing date.

You will be asked to provide additional information to explain why you are not using your permanent address, or another address identified as a result of our screening, or as a result of information obtained from the public. Requests for additional information may include utility bills, bank statements, benefit claims and copies of mortgage or rent agreements. We will also use council records to check if you receive services or benefits at another address.

Fraudulent applications

- Camden Council takes very seriously any attempt to obtain a school place through fraudulent activity
- All cases are investigated and the use of credit reference agencies has improved detection rates
- If you know someone who intends or has used a false address to get a school place, you can report this confidentially to the Camden admissions team by emailing admissions@camden.gov.uk. You do not need to give your name but please provide as much information as possible so that we can investigate the matter fully
- Fraudulent applications will result in the school place being withdrawn, even after the child has started school, and may be referred to the council's legal department for their consideration and possible action.

Guidance on completing the application form (continued)

Exceptional medical or social reason for attending a particular school

Where a parent states a preference for a particular school because of the exceptional medical or social needs of their child, they must demonstrate how this school meets the child's special circumstances. Along with your application, you should submit supporting evidence which sets out the particular reasons why the school is the most suitable and the difficulties that could be caused if your child has to attend another school. This will normally be a letter from a suitably qualified professional, such as a doctor, consultant or social worker.

Please read the school's oversubscription criteria for further information on how the criterion will be applied and see note 2 on page 14 for further details. For a copy of our exceptional medical and social policy please contact the Camden admissions team email: admissions@camden.gov.uk; tel: **020 7974 1625**. If you do not submit any supporting information, then your application will be considered under the distance criterion.

Supplementary forms

Camden's voluntary aided schools may require a supplementary form to be completed. These requirements are listed below. You need to contact the schools directly for these forms and return them to the school by the specified date (see key dates on page 6).

If you do not submit your supplementary form, or it is incomplete, then you will be considered under the distance criterion.

- **Camden School for Girls** – all applicants must register online, via the Camden School for Girls website, for the banding assessment
- **La Sainte Union** – supplementary form required from all applicants
- **Maria Fidelis** – supplementary form required from all applicants
- **UCL** – supplementary form required for visual arts places

- **William Ellis** – online supplementary form required for music applicants only; available at the open events or on the school website: williamellis.camden.sch.uk/admissions.

Secondary admissions for students with an EHC Plan or undergoing statutory assessment

The secondary transfer process is different for children with an education, health and care (EHC) plan (see camden.gov.uk/sen). You can still make use of this booklet to gain general information about Camden secondary schools. However, you should not apply through the ordinary secondary transfer process, but be guided by the SEN team of the local authority that maintains your child's EHC plan. In the case of Camden residents, the Camden SEN team will contact each family either directly or via their primary school in the summer of Year 5. If your child is being assessed for an EHC plan please apply through the mainstream process. If an EHC plan is issued and a different school agreed, you can withdraw the mainstream application.

The SEN team of the local authority that is carrying out the assessment will be able to advise you further if you have any questions. Camden also produces a booklet called 'Transfer from Primary to Secondary School: Arrangements for Camden Resident Pupils with an Education, Health and Care (EHC) Plan', detailing the secondary transfer process for students with an EHC plan. This is mailed out to all families along with a preference form. A copy can be obtained from your child's school, or from the Camden SEN team on **020 7974 6500**. For more information about the range of support and services available, including home to school transport for children with special educational needs in Camden please visit:

- camden.gov.uk/sen
- localoffer.camden.gov.uk

In-year admissions to secondary school

Admissions to Camden schools for all years, apart from Year 7 starting in September 2025, are dealt with by the schools. Please contact the relevant school for any queries regarding in-year admissions. Please also ask the school for their application form and any supplementary form required for a faith school. The school will apply the published admissions criteria if the appropriate year group is oversubscribed. If you are a parent who lives in another borough, you can contact the relevant Camden school and apply directly to the school. If you are thinking of transferring your child from one Camden school to another, you are strongly encouraged to discuss the matter with your child's current class teacher, head of year or headteacher before taking any further action. It is sometimes the case that children can take a while to settle into their new school and asking the school for further help could resolve any difficulties your child may be experiencing.

Educated out of normal age group

If your child is currently educated out of his/her normal age group, you can request that this continues, and your child remains in their current year group. Each secondary school will decide separately whether or not your child remains out of normal age group. If a secondary school does not agree with your request, your child's application will be considered in the year group according to your child's date of birth.

Camden's fair access protocol

This is run by a partnership of our secondary schools and involves a panel, which can allocate school places above the published admissions number for young people from high priority groups – such as those who have been permanently excluded or out of education for a long time. A copy of the protocol is available on request by emailing sit@camden.gov.uk.

Myth-busters

Some parents or carers make decisions based on incorrect information they have heard. Here are some of the common myths we have encountered.

Myth – Listing one school on your form will mean that the council will have to offer that school.

If we apply the admissions arrangements and your child cannot be offered a place because you live too far away, we will not be able to offer a place at the school. Listing only one school on your application does not increase your chances of gaining a place at that school.

Myth – If you live nearer to the school than the last child offered under the distance criterion last year you will be guaranteed a place.

Although the information on page 52 can give you an idea of how likely it is that you will be offered a place at your preferred school, the 'furthest distance' will change every year. We can never guarantee any child will be offered a place at any school.

Myth – Children living on my road go to the school so my child will too.

The number of pupils offered under each criterion at each school can change every year so just because you know pupils living near you that go to a certain school, it does not mean that your child will be offered a place there.

Myth – If I work close to the school, the distance is from my work to the school.

The proximity of your workplace has no bearing on your application – we will measure your distance from your home to the school.

Myth – If I have a sibling enrolled at a faith school I will get higher priority.

This may not always be the case, as some faith schools rank regular worship at a particular church above siblings. Please check the admissions criteria for your selected faith school.

Myth – My child's Key Stage 2 test results will affect their chance of securing a school place.

The Key Stage 2 test results do not form part of the admissions criteria for any of Camden's community, voluntary aided schools, or UCL Academy, so your child's results will not be considered.

Myth – The oversubscription criteria never changes.

Each year the council consults on the admissions criteria for the community schools and the oversubscription criteria can vary from year to year.

Myth – I can only apply for Camden schools.

You can apply for both Camden and out of borough schools by listing them on your application. If applying for a voluntary aided school, you should check with the school to see if they require a supplementary form to be completed as well.

Myth – If I apply to a school in another borough, their residents will have priority over me.

A council cannot give preference to its own residents and published admissions criteria cannot include the borough of residence. Camden cannot and does not discriminate between applicants who live in the borough and those who do not. However, check the admissions criteria with the appropriate authority if applying to a school in another borough.

Myth – It does not matter if my application is late.

If you apply after **Thursday 31 October 2024** your application will not be considered until after all those who have applied on time and it is very unlikely that you will be offered one of your preferred schools.

Myth – My school place cannot be withdrawn once it has been offered to me.

Once the council has made an offer of a school place, it can only be lawfully withdrawn in very limited circumstances. This may happen where an application is found to be fraudulent or a parent has not responded to an offer within the specified timescale.



Admissions criteria for community schools

- **Acland Burghley School**
- **Hampstead School**
- **Haverstock School**
- **Parliament Hill School**
- **Regent High School**

These admissions criteria apply to Camden's five community schools when there are more applications than places available.

Admissions criteria

1. Looked-after children or children who were previously looked-after but immediately after being looked-after became subject to an adoption, child arrangement or special guardianship order. This also includes previously looked after children who were in state care outside of England and ceased to be in state care as a result of being adopted. **See note 1.**

2. Applicants who have a sibling on roll at the same school who will still be on roll when they join and are living at the same address. Only siblings in Years 7 to 10 and Year 12 can be considered as siblings for secondary transfer applications. Siblings in Year 11 cannot be considered under this criterion, until they receive their GCSE results and fulfil the entry requirement for Sixth Form. Sibling refers to a brother or sister, half brother or sister, adopted brother or sister, step brother or sister, or the child of the parent or partner where the child for whom the place is sought is living in the same family unit, at the same address, as the sibling.

3. Applicants whom the council accepts have an exceptional medical or social need for a place at the school. The local authority will also accept recommendations from the SEN exceptional needs panel for an applicant whose needs support a place at a particular school. **See note 2.**

4. Children whose parent is a qualified teacher or teaching assistant, teaching at the relevant school for two years or more at the time of application and / or children of a qualified teacher, teaching at the relevant school who has been recruited to fill a vacancy for which there is a demonstrable skills shortage.

5. Applicants who live closest to the preferred school. Proximity to a school is measured on a computerised mapping system, measured in a straight line 'as the crow flies' between the property address to the centre of the school. **See note 3.** This criterion will be used as a 'tie breaker' for the first four criteria.

In the case of applicants to **Regent High School** only, priority will be given to applicants within the priority zone of Holborn and Covent Garden ward, even if they are further away within the distance criterion.

Equal preference model – will be used to decide which school is offered. This means that all school preferences are considered together and the admissions criteria administered for each school preference at the same time. The rank or order of preference will only be used if it is possible to offer more than one of the preferences. The highest ranked potential offer will be offered and the lower preferences will be automatically withdrawn.

The flow chart on page 16 provides useful guidance on how the council's criteria are used to decide which applicants are offered the available places at Camden community schools.

Notes

1. In order to be given highest priority for admission, a child has to fall within the definition of 'looked-after' in section 22 (1) of the Children Act 1989.

Paragraph 1.7 of the School Admissions Code gives equal highest priority to 'previously looked-after children'. Previously looked after children are children who were looked after but ceased to be so because they were adopted or became subject to a child arrangements order or special guardianship order. This will also include those children, in the opinion of the local authority, who have been in state care outside of England and ceased to be in state care as a result of being adopted. A child is regarded as having been in state care outside of England if they were in the care of or were accommodated by a public authority, a religious organisation, or any other provider of care whose sole or main purpose is to benefit society.

Proof of looked-after status from the relevant local authority or organisation must be included with the application.

2. Some schools give priority to children with exceptional medical or social needs. To view our exceptional medical and social policy please visit: camden.gov.uk/admissions.

If you state a preference for a particular school because of medical or social needs, you must explain how this school specifically meets your child's special circumstances better than any other school can. Along with your application, you should submit supporting evidence which sets out the particular reasons why that school is the most suitable, and the difficulties that could be caused if they were to attend another school. This will normally be in the form of a letter from a suitably qualified professional, such as a medical consultant or social worker and must not be more than six months older than the date of applying.

Please note that hospital appointment letters cannot be accepted as proof. If you or your child has mobility issues then you will be expected to accept a place at your nearest community school, if applying under the medical/social criterion.

Each application under this criterion will be considered by the medical/social advisory panel, which includes a consultant paediatrician, senior social worker, educational psychologist, school inclusion and admissions officers.

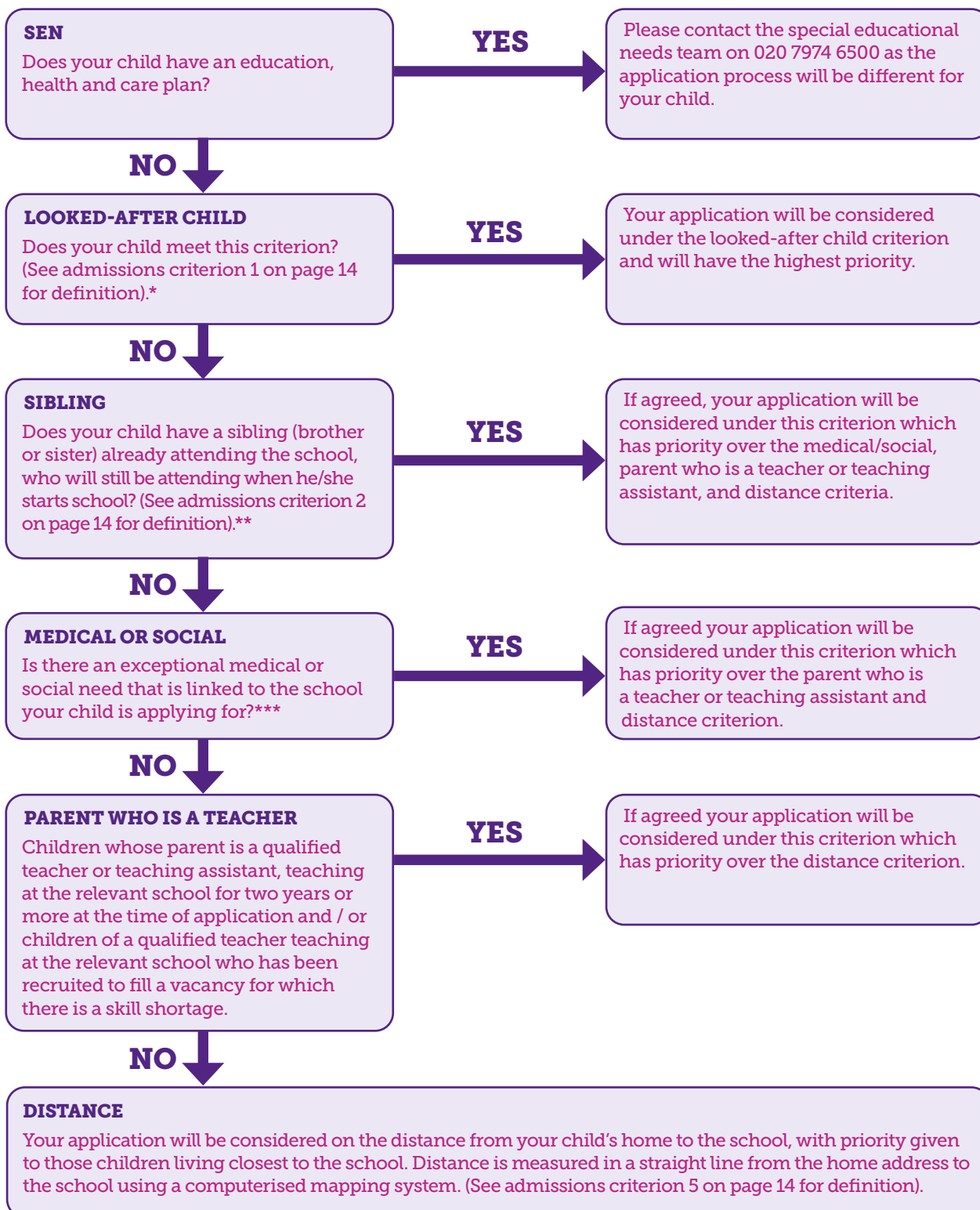
3. Any offer of a place on the grounds of proximity is conditional on the child being resident at the address provided at the closing date for applications. A business, childminder's or relative's address cannot be used as the child's home address. The address used must be the address of those with parental responsibility or legal guardianship for the child. Further proof of address may be sought and be the subject of further investigation. Proximity to the school is measured in a straight line 'as the crow flies' between the property address and the centre of the school. The point used to measure from the address is supplied by the local land and property gazetteer. In the minority of cases when applicants distance measurements are exactly the same, in blocks of flats for instance, the computer system will randomly order the priority of applicants.

4. Children with an education, health and care plan (see page 12) that specifies the community school as a placement will be allocated a place through a separate procedure, in accordance with the Children and Families Act 2014.

5. If there is only one place available at the school and the next child who qualifies for a place is one of multiple birth siblings, we will go over the community schools' published admission number where parents indicate a preference for siblings to be at the same school.



Admissions criteria for community schools (continued)



* Proof of looked-after status from the relevant local authority must be included with the application.

** Sibling refers to brother or sister, half brother or sister, adopted brother or sister, step brother or sister and, in every case, the child should be living in the same family unit at the same address. This information will need to be validated by the school in question.

*** Independent professional evidence must be included with the application.

Admissions to Camden School for Girls

Applicants should carefully read the school's complete admissions policy on the school website: www.csg.school

Application forms and deadline dates are also available on the website.

Year 7 admissions

The school admits 120 girls representing the full range of ability. Applicants should attend an assessment session at the school, which will place them in one of four ability bands. These non-competitive assessments are processed independently of the school. Thirty places are offered in each band.

The banding assessment sessions will take place on **Wednesday 25 September 2024 and Saturday 28 September 2024**. Applicants must register online for the banding assessment by **Tuesday 24 September 2024 at 12 noon**. Music applicants should follow the instructions at the end of the banding assessment registration. Parents will be informed by email of the banding assessment result on or before **Friday 25 October 2024**.

Places will first be offered to applicants naming the school who have a statement of special educational needs, or an education, health and care plan issued by or with the support of Camden local authority.

When oversubscribed, places in each band will then be offered in accordance with the criteria below.

1. Looked-after and previously looked after children. Looked-after children or children who were previously looked after but immediately became subject to an adoption, child arrangement or special guardianship order including those who appear (to the admission authority) to have been in state care outside of England and ceased to be in state care as a result of being adopted.

2. Siblings. Applicants with a sibling living at the same address who is on the roll of the school at the time of admission.

3. Exceptional medical or social need. Applicants considered by the governors to have an exceptional medical or social need that Camden School for Girls and only Camden School for Girls is able to meet. Applications will only be considered on this basis if the case is made known to the school and supported by appropriate evidence at the time of the original application. This will normally be in the form of a letter from a suitably qualified professional, such as a doctor, consultant or social worker.

4. Music places. Three places are offered on the basis of musical aptitude; five places on the basis of musical aptitude and ability. All music applicants must apply online by **12 noon on Tuesday 24 September 2024**. All music applicants will sit a multiple choice listening aptitude test in music. Three highest scoring candidates will be offered a place on the basis of musical aptitude; remaining 50 highest-scoring candidates will be invited back for a performance audition for the other five places. Applicants must also sit the banding assessment.

5. Distance. Applicants whose permanent home is nearest to the school, measured in a straight line as the crow flies, from the centre of pedestrian gate in the perimeter fence on Sandall Road.

Sixth Form admissions

Each year the school admits a minimum of 140 external students into Year 12 of the sixth form for a two-year linear A Level course. The actual number of places available to external students joining the school in Year 12 depends on the number of internal students continuing into the sixth form. In addition, 30 students will be put on the waiting list.

How places are allocated

The basic qualification: All applicants must have an academic reference from their current school stating their predicted grades. These must in all cases include GCSEs at grade 6 or above in English language and mathematics, and three other GCSEs at grade 6 or above. To study Further Maths students must be predicted a minimum of grade 7 in GCSE mathematics. Places will first be offered to applicants meeting the basic qualification (and any higher individual grade requirements in relation to their specific subjects) who have an Education Health and Care (EHC) Plan naming the school (issued by their local authority).

• **Sixth Form Open Day: Tuesday 19 November 2024. Entrance is by ticket only. Tickets will be available on website from Tuesday 1 October 2024. Please check website nearer the time.**

Admissions criteria for La Sainte Union Catholic School

Applicants should carefully read the school's complete admissions policy on the school website: lasainteunion.org.uk

Year 7 admissions

La Sainte Union was founded to provide education for children of Catholic families and is conducted by its governing body as part of the Catholic Church.

Whenever there are more applications than places available priority will always be given to Catholic applicants, according to the oversubscription criteria below.

Applications are welcome from girls of all backgrounds and denominations.

As a Catholic school, we aim to provide a Catholic education for all our pupils. It is essential that the Catholic character of the school's education is supported by all families in the school. All applicants and candidates are expected to give their full support for the aims and ethos of the school.

The governing body is responsible for admissions and intends to admit 120 girls to Year 7 in the school year beginning September 2025.

Oversubscription criteria

Girls from all faiths are very welcome to apply to La Sainte Union, as long as they adhere to our values. In the event that we are oversubscribed, which was not the case last year, priority will be given to:

1. Baptised Catholic Looked After Girls and previously Looked After Catholic girls.

Looked After girls are girls who were looked after but ceased to be because they were adopted (or became subject to a Child Arrangement Order or Special Guardianship Order);

2. Baptised Catholic girls

3. Other Looked After Girls and previously Looked After girls (the latter being girls who were Looked After but ceased to be so because they were adopted (or became subject to a Child Arrangement

Order or Special Guardianship Order); This also includes previously looked after children who were in state care outside of England and ceased to be in state care as a result of being adopted.

4. Catechumens and members of an Eastern Christian Church.

5. Other Christian Girls from families of other Christian denominations whose application is supported either by a certificate of baptism or by a letter from their faith leader confirming membership of the faith community.

6. Girls of other faiths whose application is supported by a letter confirming membership of that faith and signed by the appropriate minister of religion or faith leader.

7. All Other Girls

Up to 12 places will be reserved for applicants who show aptitude in music. Applicants who wish to be considered under this criterion are invited to submit their child's name for an Aptitude Test. Places will be allocated on merit, but priority will always be given to Catholic girls.

Where the number of candidates in any of the categories listed above exceeds the number of places available, places shall be allocated in accordance with these provisions in the following order:

1. After the first category [i] of Catholic Looked After Girls', the Governing Body will give top priority within a category to an application where compelling evidence of exceptional need is provided at the time of application. This may be from an appropriate professional such as a doctor, priest or social worker, identifying an exceptional social, medical, pastoral or other need of the Catholic girl, which can only be met at this school rather than any other school.

2. Girls who have a sibling already on roll at La Sainte Union and who will continue to attend La Sainte Union during the following year.

3. Girls who have a sibling already on roll at William Ellis School and who will continue to attend William Ellis during the following year.

4. The location of the permanent address of the candidate, with priority within this category being accorded to those living the shortest distance from the school. This will be measured by Camden LA. In the event of a number of candidates being the same distance from the school, a lottery will be used to offer places. This will take place in the presence of an independent witness.

E-admissions form, supplementary information form and other requirements

All applicants **MUST** complete:

- the e-admissions form. **It must be returned to the child's Home LA by 31 October 2024. If you do not name La Sainte Union as a choice on the e-admissions form, the Governing Body will be unable to offer your child a place.**

- the school's own Supplementary Information Form. This is available on the school's website and should be returned electronically to the school **by Thursday 31 October 2024. Without the Supplementary Information Form, Governors will be unable to consider your application fully and your child may not get a place at the school as the application will be considered under criterion 7.**

Applicants applying as a Baptised Catholic Girl must upload a scanned copy of their daughter's Baptism Certificate, or proof of reception into the Catholic Church, with their electronic application form or provide the Admissions Officer with a copy of the child's Baptism Certificate by the closing date.

If application is being made for a place at the school as a member of another Christian denomination or another faith a letter confirming membership of that Christian denomination or faith and signed by the appropriate minister of religion or faith leader, will be required. The letter should be provided at the same time as this form is returned to the school by the closing date.

These oversubscription criteria have been extracted from the school's admissions policy. Please see the school's website or contact the school directly to obtain the full policy.

Admissions criteria for Maria Fidelis Catholic School FCJ*

Applicants should carefully read the school's complete admissions policy on the school website: mariafidelis.camden.sch.uk

Year 7 admissions

Maria Fidelis Catholic School FCJ was founded to provide education for children of Catholic families and is conducted by its governing body as part of the Catholic Church.

As a Catholic school, we aim to provide a Catholic education for girls and boys and it is essential that the Catholic character of the school's education is supported by all families in the school.

The governing body has sole responsibility for admissions to this school and intends to admit 150 children to Year 7 in September 2025.

Oversubscription criteria

When the number of applicants exceeds the admission number, offers of places are made using the following order of priority:

1. Catholic looked-after children and Catholic children who have been adopted or made subject to child arrangements orders or special guardianship orders.
2. Baptised Catholic children with a Certificate of Catholic Practice.
3. Other baptised Catholic children.
4. Other looked-after children (see [1] for definition).
5. Catechumens and baptised children of Eastern/Orthodox Churches with a baptism certificate or a letter from their priest confirming enrolment in the catechumenate of the Catholic Church.
6. Other Christian children whose application is supported by a religious leader.
7. Any other children.

Note: children from 34 named feeder schools will be given priority in each category.

If there are insufficient places to admit all candidates in any of the above categories, priority will be given to those living closest to the school measured 'as the crow flies' from home address to centre of the school. The address given must be the one in which the child normally lives.

The governing body will give top priority, after the category of looked-after children, to children whose exceptional medical, social or pastoral needs justify a place at the school where compelling written evidence is provided, at the time of application, from an appropriate professional e.g. doctor, priest or social worker.

The attendance of a sibling at the school at the time of enrolment will increase the priority of an application within each category.

Sixth Form admissions

Current pupils will make an application to indicate their subject choices, and they will all be offered a Sixth Form place, subject to fulfilling the individual requirements of suitable courses. Governors propose to admit a minimum of 30 external applicants annually to the Sixth Form with the required academic qualifications for the proposed course of study.

Application forms are available on the Sixth Form section of the school website. In the event of oversubscription, the criteria and priorities listed in this policy will apply.

Application procedure

All applicants must complete a Common Application Form (CAF) available from and returned to the local authority in which they are resident by **Thursday, 31 October 2024**. Applicants should also complete the Maria Fidelis Supplementary Information Form (SIF), available from the school or the local authority and returned to the school by **Friday 25 October 2024** with all relevant paperwork.

Those wishing to be considered under Criterion 2 or 3 should provide the school with a copy of the child's baptismal certificate. Those applying under Criterion 2 should obtain a Certificate of Catholic Practice form from the parish or diocesan website, fill in the top part and ask their parish priest to sign it.

These oversubscription criteria have been extracted from the school's admissions policy. Please see the school's website or contact the school directly to obtain the full policy.

* FCJ – Faithful Companions of Jesus



Admissions criteria for William Ellis School

Applicants should carefully read the school's complete admissions policy on the school website: williamellis.camden.sch.uk

Year 7 admissions

The school will admit up to 112 boys into Year 7 and will also fill in-year vacancies in any year up to Year 11. In the event of over-subscription to the school, the following criteria will be applied in order:

1. Looked after children. This can include a child who was previously looked after but immediately after being looked after became subject to an adoption, child arrangement or special guardianship order.
2. Applicants with a brother in the school or sister in William Ellis Sixth Form or on roll at Parliament Hill School or La Sainte Union School at the time when the applicant is to join. This can include siblings in the sixth form as long as they are on roll at our school, or at Parliament

Hill or La Sainte Union and will still be on roll when the sibling joins.

3. Applicants who can demonstrate that admission to William Ellis School is necessary on the grounds of professionally supported medical or social need. Parents/carers must supply details of any such special factors at the time of the original application, together with supporting documentation. Such applications will not be considered without professional support – such as a letter or report from a doctor, consultant or social worker and which must be no more than six months old. All information submitted will be regarded as confidential. The supporting documentation will need to support the link between the need and the school.

4. Applicants who can demonstrate musical aptitude as measured by the school's assessment criteria. Up to 10% of places will be offered on this basis. For further details, please visit williamellis.camden.sch.uk/secondary-transition.

5. Applicants who have a parent employed at the school for two years or more at the time of application and/or children of a qualified teacher training at William Ellis School who has been recruited to fill a vacancy for which there is a demonstrable skills shortage.

6. Applicants who live closest to the school, measured in a straight line to the centre of the school.

These oversubscription criteria have been extracted from the school's admissions policy. Please see the school's website or contact the school directly to obtain the full policy.



Admissions criteria for UCL Academy

Admissions to UCL Academy follow the same criteria as Camden community schools, with the exception of 18 places offered to those with an aptitude for visual arts.

For further information and full details of UCL Academy's admission criteria, please visit uclacademy.co.uk/admissions



Post-16 in Camden

Students in Camden benefit from access to the successful and expanding post-16 offer available across every secondary school in the borough.

Our Sixth Forms continue to go from strength to strength, with improved exam results and an impressive alumni of students who have gone on to achieve and succeed in a wide range of careers.

Choosing a Sixth Form in Camden opens up a world of opportunity and is a pathway to future success.

Secondary school Sixth Forms

Camden School for Girls, Hampstead, Haverstock, Maria Fidelis, Regent High and UCL all offer individual Sixth Forms. The wide range of courses and subjects these offer, both academic and vocational, ensures that every young person's talents and interests are catered for, enabling each student to enter higher education, or the world of work, equipped with the qualifications and skills they need to succeed in their chosen path.

Our school Sixth Forms boast impressive learning facilities, outstanding enrichment and extracurricular programmes, including mentoring opportunities and volunteering within the community, as well as careers advice and personalised guidance and support during the university application process.

For more information visit the relevant school pages 22 to 51 and their admission pages 14 to 20.

LaSWAP Sixth Form

Students in Camden can also attend our LaSWAP Consortium, the largest post-16 provision in Camden and the longest established Sixth Form consortium in London. It combines the strengths of its four partner schools: Acland Burghley, La Sainte Union, Parliament Hill and William Ellis and aims to ensure outstanding progress and achievement for all students, equipping them for future success.

The LaSWAP team of specialist teachers provides consistently excellent teaching. The consortium enjoys a well-deserved reputation for high expectations and academic success. Students benefit from a wide range of academic and vocational subjects and enjoy a curriculum that is up-to-date, innovative and forward looking. Students are based in one of the four schools where they take at least one of their courses, as well as being able to access subjects in any of the other three schools.

LaSWAP students have the opportunity to develop personally and academically within a structured environment that offers the flexibility and diversity of a college with the individual care of a school community. They receive excellent advice and guidance on future opportunities, including support from a nationally renowned team of higher education advisors.

Admissions criteria for LaSWAP Sixth Form

LaSWAP is open to all Sixth Form students who meet the specified entry requirements for the courses on offer. In the event of more applicants who meet the entry requirements than places, available places will be allocated according to the following criteria in order of priority:

1. Looked-after children or a child who was previously looked-after but immediately after being looked-after became subject to an adoption, child arrangement or special guardianship order.
2. Existing students of the school who are continuing their studies from Year 11.
3. Applicants who are judged to have an exceptional social or medical need. There will need to be a very clear link between the child's exceptional need and the school. Parents/carers will need to submit a case supported by appropriate professional evidence from a doctor, social worker, or similar professional. That evidence will need to support the link between the need and the school.
4. Distance, as measured in a straight line from the child's home address to the centre of the school where LaSWAP is based, using the local authority's computerised mapping system. Those living closer to the school receive the higher priority.

For more details visit laswap.camden.sch.uk

LaSWAP

THE SIXTH FORM OF CHOICE

Acland Burghley School



Creating excellence together

Headteacher

Nicholas John

School address

Burghley Road, London NW5 1UJ

T: 020 7485 8515

E: info@aclandburghley.camden.sch.uk

W: www.aclandburghley.camden.sch.uk

Ages 11 to 19

DfE number 202 / 4285

Places available September 2025

182 (including four places in resource base for students with autism)

Open Evening

Wednesday 25 September 2024 at 5pm

Open Mornings

24, 25 and 26 September 2024 from 9am

Sixth Form Open Evening

Thursday 28 November 2024, 5.30 to 8pm at William Ellis and Parliament Hill Schools (pre-registration is required – see the school website or www.laswap.camden.sch.uk)



School fact file

We are a thriving mixed community comprehensive for students aged 11-19. Academic excellence and creativity are at the heart of our curriculum offer.

In October 2023, Ofsted confirmed us again as a 'good' school. They said we are "An inclusive community in which all pupils feel welcome" with "High expectations for all pupils" where "Pupils enjoy school. They are enthusiastic, happy and take pleasure in learning."

Our excellent provision in the arts and sport encourages student creativity and resilience, providing enriching experiences for all. All students benefit from our unique and UK-first partnership with the Orchestra of the Age of Enlightenment, who are resident in our school.

Students and parents consider the home-school communication to be a strength of the school, valuing the positive relationships between staff, students and parents. Our induction programme supports effective transition from Year 6 to secondary school.

Dear Parents and Carers

I am proud to invite you to visit Acland Burghley School.

It is an exceptional place for children to learn. Our rich, academic and creative curriculum supports students to become independent, self-regulating young adults. Every student is an individual who is entitled to achieve their full potential, building on the foundations they have laid at primary school.

We put great emphasis on high standards of literacy, mathematics, science, languages and sport, preparing every child for progression to university or further study. We are also proud of our distinctive arts specialism. Art, Music, Dance and Drama are key strengths. We provide excellent facilities such as a professional dance studio and a wide range of extracurricular clubs and activities such as creative writing, debating and coding clubs.

Children are supported in their school journey by friendly and approachable staff, who believe in them, and challenge them to achieve their goals. Our happy, diverse community supports all students to be confident and outward looking, so that they can be the best that they can be. We look forward to meeting you soon.

Yours sincerely,

Nicholas John, Headteacher

Martha Collins, Head of School



Our school: 'Creating Excellence Together'

We are proud to be a mixed, truly comprehensive school which values every one of our students and supports them to be the best that they can be. We work closely with our partners in the local community to secure the best outcomes for local children from a diverse range of backgrounds. Our inclusive school community leads to a stimulating, rich and harmonious learning environment.

"At a time when the arts seem marginalised in so many state schools, this was a heartwarming example of what fine standards can be achieved with inspiring leadership."
[The Times commenting on Acland Burghley in January 2024](#)

Each student is a proud member of a Year Team. A dedicated team of staff enables all students to make outstanding progress and achieve excellent results. Every student receives care and guidance from adults who really know each individual.

We offer a wide programme of extracurricular activities. The school places great importance on trips and cultural activities. These give students many opportunities to experiment and to extend their learning.

Curriculum

Our curriculum offer supports students to achieve academic excellence. Many students go on to achieve the highest grades at GCSE and A Level, and to progress to top universities including Oxbridge. Our highly qualified teachers are exceptionally well placed to ensure high quality teaching and learning. We ensure rapid progress for all, whatever their starting points.

The curriculum also gives students a broad range of choices to follow their interests and create an individual pathway. Students will develop their creativity, independent learning skills and intellectual curiosity, as well as the skills necessary for exam success.

Throughout Key Stage 3, your child will follow a shared curriculum that builds on

their achievements at primary school. We provide a broad and balanced programme, including all core subjects and either French or Spanish. In Year 9, keen language learners can also choose to study both French and Spanish with the option of taking up both subjects at GCSE. In Year 7 students also study Classics and Latin lessons twice a fortnight. Class groups are put together to ensure a high level of stretch and challenge. Tutor groups provide a strong cohesive 'home' throughout your child's journey with us.

At Key Stage 4, students have the flexibility of following the EBacc pathway or choosing up to 2 creative subjects together if it is appropriate for them.

We encourage creativity across the curriculum, stimulating personal development, self-confidence and success. The Performing Arts are key strengths. We build students' ability to think creatively, express themselves confidently, and engage with the world around them. Through this approach, our students can become expert life-long learners.

Parent feedback

“The school has such a positive and purposeful air to it, each and every one of my child’s teachers are thoughtful and engaged (and delightful) – and he clearly respects and enjoys their teaching. He and we are very lucky to be part of this community”

“The support we’ve had from your team has been outstanding – caring, considered and (crucially) meticulously joined up across all departments.”

“I will be forever grateful for their kindness and dedication. It was a brilliant experience for him – and for us. He leaves you in really great shape”

A school with a bright future

Acland Burghley is building on its reputation as a highly successful, mixed community school, offering an excellent comprehensive education to students from a wide range of backgrounds.

When Ofsted visited the school in March 2018, they commended on the continued quality of teaching and leadership in the school. The report said that “Pupils enjoy their learning because teachers make it worthwhile and fun.”

The report noted that “Leaders have developed a curriculum that is ambitious and... progressively builds on pupils’ knowledge over time” and added “Teachers have strong subject knowledge and present information clearly during lessons.”

Unique opportunities

All young people thrive on responsibility and ours have a number of different opportunities that allow them to do just that.

Student voice plays an active part in the leadership and management of the school to ensure that the community is working for the benefit of all its members.

Acland Burghley Ambassadors are trained in hospitality, to show visitors around the school.

Student interview panels play an important role in the appointment of all staff.

Students work with the Anne Frank Trust every two years and become peer educators on the theme of tolerance.



Peer mentors play an important role in the transition process to ensure younger students settle and develop.

All students take part in workshops delivered by our resident orchestra, the OAE and also have the opportunity to learn production, marketing and event management skills through the innovative Young Producers Club run by the orchestra.

Sixth Form

Acland Burghley Sixth Form is part of the highly successful LaSWAP Consortium, which includes La Sainte Union, Parliament Hill and William Ellis. We offer an unrivalled range of AS and A Level subjects and a comprehensive range of vocational courses.

From September 2024, students will also be able to enrol onto the Media, Broadcast and Production T Level course, a new post-GCSE qualification that combines in-class learning and extended industry placements. On top of this, further T Levels are currently being developed across the sixth form consortium.

For further information on our Sixth Form, please visit laswap.camden.sch.uk



Camden School for Girls

School fact file

2023 GCSE results were well above the national average: 93% of all results across all subjects were 9-4 (standard pass) and 51% of all results were grades 9-7.

2023 A Level results were also above the national average: 79% of students achieved A* to B grades and 50% achieved A*- A grade.

In 2023, 39 of our students gained places at Oxford, Cambridge and Medical School.

Extracurricular activities are of an exceptionally high calibre in music, debating, science, art, PE, literature, humanities and languages, philosophy, design and technology.



Headteacher

Kateryna Law

School address

Sandall Road, London, NW5 2DB

T: 020 7485 3414

E: csg@csg.school

W: www.csg.org.uk

Ages 11 to 19

Places available September 2025

120

DfE No 202 / 4611

Open Evening

Monday 23 September 2024, 5 to 7pm

Open Mornings

18 and 20 September 2024, 9 to 11am

Sixth Form Open Event

Tuesday 19 November 2024. Tickets will be available from 1 October 2024 - check the website nearer the time





“I’m so grateful for the progressive toolkit that Camden School for Girls has given me for entering the real world” Former student



Mission

“The school maintains its roots and traditions whilst providing the students with an outstanding quality of education, ensuring they are ready to make their mark in the 21st century world in which they live.”

Camden Learning

Our aims are to:

- maintain and develop the school’s tradition of providing the highest quality of education
- offer equality of opportunity and care for all students, whatever their race, gender, class, creed or special needs
- promote a sense of environmental and social responsibility
- encourage all students to:
 - develop their individual talents to the full
 - have confidence in themselves and a sense of self-worth
 - work co-operatively with others
 - develop independence of thought
 - value education and enjoy learning
 - be tolerant and open-minded
 - show consideration for others and respect their diverse qualities and needs
- sustain and promote the school’s ethos, heritage and philosophy within the contexts of public policy, social trends and educational need.

Curriculum

We offer an extensive range of subjects, within and beyond the National Curriculum.

In years 7-9 students study a language (French or Spanish), computing, art, music, DT, geography, history, theology, in addition to English, mathematics and science. This broad range of subjects allows all students to get a good grounding before they begin GCSE study in Year 10.

A distinct part of our provision is our comprehensive offer. Classical studies is taught throughout Year 8, and students choose between classical studies and Latin in Year 9.

Key Stage 4 (years 10-11) offers a wide range of academic and vocational, traditional and modern subjects including art, hairdressing and beauty therapy, health and social care, classical civilisation, geography, Greek, history, computing, Latin, triple science, music, further maths, computer science, PE, theology, philosophy, sociology, product design and textiles.

Experience for life

We offer a range of performance opportunities, including a 70-piece symphony orchestra and numerous smaller ensembles. We present many concerts and offer many performance opportunities for all students. We have received the Mayor of London's Music Award.

Other activities for students include debating, dance and a wide range of sports. Our PE department offers a large selection of activities including trampolining, football, netball, basketball, volleyball, badminton, athletics and dance. The department has strong links with the Highgate Harriers and Arsenal Football Club and school teams participate in a wide range of borough and London based competitions. We make excellent use of London's attractions, including trips to theatres, art galleries, museums and sites of historical, artistic, scientific, technical, religious, literary or geographical interest. Trips abroad are organised for some year groups. All departments organise homework clubs after school and at lunchtimes to further students' learning and knowledge.



Unique opportunities

The school develops leadership opportunities through the school council and senior prefect elections. Students are offered a wide range of clubs and societies, such as the philosophy club, debating society and feminist club, where their input is valued when developing and maintaining whole-school initiatives.

"Once you've entered the Camden community, you never really leave."
Main School Head Prefect



Hampstead School



HAMPSTEAD SCHOOL
Learning together Achieving together

Headteacher

Matthew Sadler - B.A. (Hons), PGCE,
NPQH

School address

Westbere Road, London, NW2 3RT
T: 020 7794 8133

E: enquiries@hampsteadschool.org.uk
W: www.hampsteadschool.org.uk

Ages 11 to 19

DfE number 202 / 4275

Places available September 2025
210

Open Evening

Tuesday 8 October 2024 from 4.30pm

Open Mornings

(please arrive for 9.15am)

17, 24 September, 1, 15, 22, 23 October
2024

Sixth Form Open Evening

Tuesday 19 November 2024, 6pm



School fact file

"Pupils at this school benefit from a welcoming and inclusive ethos".

"Leaders have established a calm and purposeful learning environment where pupils are encouraged to 'Think Big, Work Hard and Be Kind'".

"Diversity is celebrated and unkind or discriminatory behaviour is not tolerated."

Ofsted, 2023

Mission

We pride ourselves on our reputation as a high achieving school, where expectations are challenging and success is natural. Our students make rapid and sustained progress. However, we are not complacent and seek to ensure that we maximise the potential of every new cohort of Year 7 students. This is helped by our new buildings, which have introduced fantastic facilities.

Central to all we do, is the quality of relationships we build with our students. It is these relationships that have been the stepping stones to our success. Our staff take the time to learn about the young people in our care. This fosters a positive rapport and conducive environment for our students to flourish.

"Class teachers and form tutors establish strong relationships with their pupils. This means pupils are confident to discuss any issues or concerns with their teachers."
Ofsted, 2023

Our vibrant and energetic student community is founded on values of self-discipline and tolerance, reflected in being the first secondary school in London to be recognised by UNICEF as a Level 2 Rights Respecting School.

Curriculum

Our curriculum is inspirational and aspirational, challenging the needs of every child as an individual. All children have a right to a broad, balanced and relevant education, which provides continuity and progression and takes individual differences into consideration. Students are grouped by ability where appropriate, receiving extra support either to accelerate and stretch the most able or to ensure that no student falls behind.

"Leaders have high expectations of pupils' behaviour. Corridors and social spaces are calm and orderly. High levels of attendance demonstrate pupils' positive attitude to their learning." **Ofsted, 2023**



Bright futures

We provide a diverse and rich learning environment in which students further develop their skills as independent learners. We work hard to ensure that they have the knowledge and self-belief to compete and flourish in a changing educational and social environment, no matter how challenging. We encourage students to develop enquiring minds and to make the most of the many opportunities for positions of responsibility, including peer mentors and prefects.

Our provision of personalised and tailored support, enables students to develop confidence and respect. We actively encourage our students to take responsibility for their own learning, recognising and celebrating them as individuals with unique skills, talents and interests. Our Student Leadership Team makes positive contributions towards shaping change in our school.

We are proud that all our students leave us with strong ambitions and a clear vision of their future, with the capacity to achieve it.

Experience for life

Our extensive range of clubs include numerous sports, an artist-in-residence, homework, computing, science, poetry reading and writing, debating and history and mathematics societies. Enrichment days are a regular feature of life at Hampstead School, including visits to museums, exhibitions, universities and galleries. Students also enjoy longer residential visits such as ski trips, languages trips and study tours.

“Leaders provide a range of clubs and activities for pupils to attend at lunchtime or after school, including a range of sports and performing arts clubs.” Ofsted, 2023



“I joined Hampstead School because of its great academics and a welcoming atmosphere, with the staff always being there to support.”

Zahra Arshad, Principal Student (2023-24).



HAMPSTEAD SCHOOL



Sixth Form

In Year 12, students choose from a variety of courses taught at Level 2 and 3 to offer progression. These range from traditional subjects such as Mathematics, Computing and History, to truly vocational courses including Financial Studies and Health and Social Care which lead to university or apprenticeships.

Our curriculum is strongly complemented by a comprehensive enrichment programme. Activities include overseas residential visits, workshops with film directors at the Roundhouse, performing at the Donmar Warehouse theatre, Digital Leaders Programme, Model United Nations and Debating as well as visits to West End theatre shows and museums.

Our students also take advantage of the plethora of opportunities we provide within the field of education, with university visits and workshops, national competitions in debating and mathematics, internships with top City banks, hospitals and law firms, as well as bespoke work experience, to name just a few!

We are continuing to build a culture whereby our students and parents work in partnership with us, to ensure every student receives an enriching learning programme that supports them in embarking on the rest of their lives as confident, well-rounded young adults.

“Leaders have made reading a priority. Many pupils, including those new to English, benefit from extra help.” Ofsted, 2023



Haverstock School

School fact file

A broad, inspiring and dynamic curriculum to challenge all learners and harness their curiosity.

Very high expectations of student conduct through our 'Disruption Free Classrooms' policy.

Exceptional pastoral care and support, encouraging students to be aspirational and motivated for their futures whilst nurturing and supporting their wellbeing.

Expansive co-curricular offer encompassing academic, sporting, cultural, creative, citizenship and careers activities.

World-class preparation for the next stage of our students' lives through our well-established Haverstock Careers Programme.

Dear Parent / Carer

Thank you for your interest in Haverstock School. We are a happy and ambitious school, and we'd love to welcome your child. As well as equipping our children with the attributes, skills and knowledge to gain their best possible qualifications, we're also equipping them to live their best lives. From the first day your child joins Haverstock, they'll be encouraged to discover their passions and build their confidence. We'll give them enriching opportunities to find out what they love. Whether it's music or maths, drama or debating, football or Journalism club, our timetable of co-curricular activities will help them grow into happy and fulfilled young people.

We'll guide your child's life choices too: our unrivalled careers programme helps each student understand how their lessons can relate to the world of work. With visits, talks, workshops, mentoring and work placements, our careers focus is the best of any Camden school. From the high achievers to the quietly anxious, we have great ambitions for every single one of our pupils. I hope you will visit us to see the transformation in our happy and ambitious school.



Katie Metselaar



Head of School:

Katie Metselaar

School address

24 Haverstock Hill, Chalk Farm,
NW3 2BQ

T: 020 7267 0975

E: Office@H3Federation.org.uk

W: www.haverstock.camden.sch.uk

Ages 11 to 19

DfE number 202 / 4104

Places available September 2025

135

Open Evening

Tuesday 1 October 5 to 7pm

Open Mornings with tours of classrooms:

Drop in any Thursday from 9 to 10am
from 27 September to 25 October 2024

Sixth Form Open Events

Please check our website for details
of Sixth Form Open Events.





Mission

We ensure that every student flourishes into a confident and highly competent young adult with the knowledge, skills, qualifications and attributes for a successful and fulfilling life.

We develop students' independence and resilience and we support them to become well-informed citizens who are well-prepared for a complex and competitive world.

We maintain a highly stimulating, friendly and supportive learning environment with a modern, building that is totally learning-focused so that all children thrive.

We build strong relationships with the children, families and community, ensuring that every child has a seamless transition into their secondary education. Families who are new to us will quickly feel the benefit of our superb pastoral care.

Our ethos of 'Aim High, Step Forward, Be Kind' is the bedrock of our offer to and expectations of every student.

Curriculum and Co-curriculum

Our stimulating, innovative and creative curriculum is delivered by highly qualified and committed teachers who motivate students and prepare them for the demands of GCSE and Sixth Form qualifications. Our broad and engaging Key Stage 3 (Years 7-9) curriculum is designed to develop students' knowledge and expertise across a wide range of subjects before selecting from a wide range of GCSEs and several vocational options to study during Years 10 & 11.

We build a detailed academic and pastoral profile of each learner and develop it during their time at Haverstock. Each child is provided with and adds to a professionally produced record of achievement files as they progress through the school.

With class sizes never more than 30, and often significantly lower, we tailor our teaching and support to match learners' talents, interests and needs. As well as our regular communications regarding each child's progress, we actively encourage parents to raise questions or

concerns, however small, so that we can work in partnership to ensure that each child is as successful as possible.

All of our students will be able to access our Co-curricular programme which is carefully designed to broaden their horizons and to develop new skills, hobbies and interests beyond what is formally taught.

Highlights include: our close partnership with The Roundhouse, including professionally run creative projects. Sporting activities such as, football, basketball and trampoline with opportunities to represent the school in a range of local and national competitions. Camden Summer University programmes. Extensive partnerships between our Creative and Performing Arts departments and Central Saint Martins, the V&A, Wigmore Hall and the Royal Albert Hall.

Our Co-curricular programme is more than just school clubs; it's about developing character and experience. Our students will become more determined, more committed, better at teamwork and more confident individuals and leaders who can compete with the best students in the country.

"I'm so grateful to Haverstock School for all the support and opportunities it has given my children. I wholeheartedly recommend it to any parent." Parent

Sixth Form

Over a third of Haverstock Sixth Form students attain places at elite Russell Group universities and also Oxbridge (42% in 2021). With a wide range of A Level and vocational courses along with unrivalled personal development and careers programmes, our growing Sixth Form is thriving and going from strength to strength. 2024 sees Haverstock School launch the brand new T Level qualification which will harness the already exceptional workplace opportunities that already exist in our school. Finally, we are the only school in Camden to offer students the opportunity to study alongside be part of a football academy. This brilliant partnership with Bloomsbury Academy is growing in 2024 to include a girls' team.



“Six years ago, I chose Haverstock School because I’d heard good feedback from parents and it was a local school. Last year I had to make my choices again: I didn’t hesitate to enrol my youngest in Haverstock School.” Parent



La Sainte Union Catholic School



La Sainte Union CATHOLIC SCHOOL

Headteacher

Mrs Sophie Fegan

School address

Highgate Road, London, NW5 1RP

T: 020 7428 4600

E: admissions@lsu.camden.sch.uk

W: www.lasainteunion.org.uk

Ages 11 to 18

DfE number 202 / 5401

Places available September 2025

120

Open Evening

Tuesday 17 September 2024, 4 to 7pm

Open Mornings

8 and 17 October, 9 to 11am

Please register your place on the school website.

Sixth Form Open Evening

Thursday 28 November 2024, 5.30 to 8pm at William Ellis and Parliament Hill Schools (pre-registration is required – see the school website or www.laswap.camden.sch.uk)



Bright Women. Bold Futures.

La Sainte Union Catholic School is an 11-18 girls' school with a mixed sixth form, that is part of the renowned LaSWAP Consortium, situated on a beautiful Georgian campus adjacent to exclusive Hampstead Heath.

We have a rich history and tradition of educating and empowering our students through a prodigious education, outstanding enrichment opportunities, exceptional pastoral care and an award winning careers programme. Our students, in turn, reward us by developing into kind, confident, articulate young women who go on to shine in their chosen field.

The testament is our amazing hall of fame, including alumnae following exemplary careers across the globe; from doctors, veterinarians and palaeontologists to lawyers, architects and entrepreneurs and from authors, journalists and mathematicians to musicians, actors and artists.

School fact file

"Leaders expect all pupils to achieve their best. Pupils respond well to their teachers' high expectations. School leaders have planned the curriculum well so that all pupils study and achieve highly in a wide range of subjects...Pupils told that they find learning challenging but fun." Ofsted 2019

La Sainte Union has consistently been in the top-rated schools nationally. In 2018, 2019 and 2020, the school received awards for being in the top 10% for both progress and attainment.

In 2023, 28% of our Year 13 students succeeded in securing a place at a Russell Group university, compared to the national average of 17%.

The school was rated 'Good' by Ofsted in October 2019 and 'Good' in the Section 48 Catholic Schools Inspectorate inspection report in May 2023.

Additional achievements and awards include, but are not limited to, the National Quality in Careers Standard, Music Mark, QuIC award, International School Status, Jack Petchey Speak Out Challenge winners and being the founding member of London Citizens UK.



Curriculum

Our rigorous curriculum is delivered by passionate, dynamic, forward-thinking staff who have a deep enthusiasm for their subject and inspire our students to achieve beyond their own expectations.

“Teachers have strong subject knowledge.” Ofsted 2019

Students can study a wide range of subjects including STEM, humanities, the creative arts and modern foreign languages. We also lead the way in artificial intelligence, providing students, our local primary schools and the wider community with innovative and cutting-edge opportunities in this rapidly evolving field.

Throughout the curriculum, there is a constant emphasis on high levels of literacy, intellectual challenge and independent learning so that our students are prepared to progress at key stages, including KS3 to KS4, post-16 and post-18.

Experience for life

Our outstanding enrichment programme encompasses educational visits in the UK and abroad (e.g. Paris, Spain, CERN in Switzerland and NASA in Florida), a wide range of clubs and activities (e.g. debating, robotics, music, drama and sports), workshops and events, leadership roles and philanthropy to enhance learning, nurture passions and promote cultural capital.

“The school has great teachers who encourage and engage my daughter to participate in activities so that she feels valued as a part of the school community. La Sainte Union continues to offer great support to my daughter, giving her every opportunity to share her experience, skills and thoughts.”
Year 8 parent

We ensure our students’ talents, success and endeavour are celebrated and recognised. They have the chance to represent their school in a range of team and individual sports, competing at a local and national level and regularly bringing home the silverware; they can take to the stage, participating in a number of school productions, performances and debating competitions; and they can take on positions of responsibility through leadership roles, committees and action groups.

Our award winning careers programme, led by a dedicated careers leader, addresses the individual needs of every student, enabling them to make bold, informed choices about their future. Through strong partnerships with local, national and global organisations, students are connected with employers from across a variety of sectors, enabling them to learn more about, and develop the skills they need to enter, their desired careers successfully.

Everyone is so welcoming and supportive here at La Sainte Union. I feel I have settled in well and have made lots of new friends, especially thanks to the Induction Day and Summer School.”

Year 7 pupil





“The school has great teachers who encourage and engage my daughter to participate in activities so that she feels valued as a part of the school community. La Sainte Union continues to offer great support to my daughter, giving her every opportunity to share her experience, skills and thoughts.” Year 8 parent

Community

Whilst we are a Catholic school, we warmly welcome students of other faiths and beliefs, and those of none, who are ready to embrace our ethos and values. Interfaith dialogue is a key part of religious studies and PSHE, promoting cultural awareness, and students have access to an extensive programme of religious education and worship, including daily prayers, weekly Mass and a retreat programme.

“Relationships between staff and students are strong; students told inspectors they view the school as a place of safety in which they are well cared for.” Catholic School Inspection 2023

Our exceptional pastoral team focus not only on students’ academic achievement but their personal development, mental health and wellbeing too. We ensure every student is known, valued and celebrated as a unique individual within a supportive environment. In doing so, students are taught powerful life skills and values, including respect, integrity and empathy, inspiring them to make a positive impact on the world around them.

“Students are happy, confident and feel valued by the school.” Catholic School Inspection 2023

The care and support we provide starts long before our students’ first day in Year 7 as we believe it is essential to provide new starters with an enjoyable transition experience as they step up from primary to secondary school. Our transition programme has been exclusively designed to ensure we get to know each and every child joining La Sainte Union through a range of events and activities that run between March and September, and beyond.

Sixth Form

La Sainte Union is part of the renowned and highly successful LaSWAP Sixth Form Consortium, along with neighbouring schools Parliament Hill School, William Ellis School and Acland Burghley School (see page 21).

Together, we can offer an array of A Level and vocational courses and enrichment opportunities, from extra-curricular activities, educational visits and career insights to volunteering, leadership roles and the Extended Project Qualification. Students’ destinations are impressive as a result, with many securing places at Oxbridge and Russell Group universities.



Maria Fidelis Catholic School FCJ*

School fact file

Maria Fidelis is a Roman Catholic co-educational school, rated good by both Ofsted and Westminster Diocese.

Brand new building with excellent facilities.

We are a smaller than average secondary school with a supportive, family atmosphere.

Consistently above national averages for GCSE in both progress and attainment measures.

Targeted programme for Gifted and Talented students from Year 7; more able students are offered the opportunity to study Latin and triple science.

Mission

Our school began serving the local Catholic community in 1830 under the direction of Marie Madeleine D'Houet, founder of the religious order, the Faithful Companions of Jesus (FCJ). The sisters are still involved in our school today, serving on our governing body and contributing to the spiritual life of the school.

Our vision is that FCJ schools are communities of personal and academic excellence. Strong in companionship, the unique giftedness of every person in these faith communities is recognised, nourished and celebrated. Our hope and expectation is that, through God's grace, working in us all, each young person grows into their best self, with zest for life and the generosity and confidence to use their talents and gifts in the service of others.

Our school is underpinned by our mission – growing together through Christ with courage, confidence and dignity.

Curriculum

It is our expectation that the majority of students will follow a traditional, academic curriculum. The most able are identified early in Year 7 and are given the opportunity to study Latin. They are also mentored by graduates from Russell Group universities, who monitor their progress and coach them for higher education.

Students are organised into broad ability bands in Years 7 and 8, with increased setting in key subjects as they progress up the school. We are committed to encouraging creativity. Subjects such as drama, music and art are key aspects of the students' experience.



Maria Fidelis
Catholic School FCJ

Headteacher

Mr M. Anthony

School address

1–39 Drummond Crescent,
London NW1 1LY

T: 020 7387 3856

E: office@mariafidelis.camden.sch.uk

W: www.mariafidelis.camden.sch.uk

Ages 11 to 19

DfE number 202 / 4652

Places available September 2025
150

Open Evening

Wednesday 25 September 2024, 4 to 6pm

Open Mornings

Every Tuesday during term time. Please check our website for more information.

Sixth Form Open Evening

Please check our website for more information.



*FCJ - Faithful Companions of Jesus

MARIA FIDELIS CATHOLIC SCHOOL



Bright futures

Each student is allocated a form tutor, who provides pastoral and academic support for the form group and works closely with the Head of Year to support every child. Our small size allows us to nurture each child as an individual, providing highly personalised support and challenge for all abilities. Progress is formally monitored three times a year and a rigorous intervention programme of support ensures students remain on target. The curriculum is differentiated to allow students of all abilities to be appropriately challenged and a substantial enrichment programme of after-school activities supports their holistic development. We are able to offer 'in house' instrumental lessons in piano, guitar, drums, saxophone, flute, trumpet, trombone and music technology via EMUSIK Music Service.

"Maria Fidelis is a high-achieving school. The communications between parents and the school are great. I am really delighted with everything they have done for my child." **Parent**

Experience for life

We are committed to providing enrichment experiences for all our students and make regular use of the excellent local opportunities available to us, as well as offering national and international visits. These include: mentoring from City businesses such as Deloitte, a range of inspirational talks in partnership with Speakers for Schools, and opportunities to work with academics from leading scientific institutions, the Kings Cross Urban Partnership and university departments. Our house system encourages students to develop their confidence and leadership skills through organising events, taking part in a range of challenging competitions and supporting younger members of the school community.



Unique opportunities

- Over 80 trips throughout the year to support extracurricular learning
- Clubs ranging from debating to street dance, boxing to art club, police cadets to fencing
- Key Stage 4 and 5 students have the opportunity to be involved in The Duke of Edinburgh's Award scheme
- Trips to Oxford and Cambridge from Year 9
- Links with leading independent schools to provide further challenge and broaden pupils' experience.

Sixth Form

Maria Fidelis has a thriving Sixth Form which meets the academic and pastoral needs of our young adults reflecting our underlying Catholic values.

These core values encourage all our students to reach their full potential, with support from our well-established pastoral team, academic mentors and tutorial programmes. We have excellent relationships with top universities including Oxford, Cambridge, LSE, UCL and Durham and a wide variety of leading professional City organisations.

Our comprehensive programme of support upholds our school ethos of aspiration and academic excellence. Carefully tailored and personalised work experience placements reflect this, and enable our students to meet their full potential. Placements have included: commercial firms such as Marks & Spencer, Zinc, Urban Partners, Eurostar; engineering and construction firms: Lendlease, Laing O'Rourke and Crossrail; and in the medical field, Bupa, Royal Free and University College Hospitals; in addition to social media organisations: the Guardian, Facebook and Google. Students are encouraged to lead community-based activities for our school as well as charities and voluntary organisations, supported through the RE curriculum i.e Community Action Day /SMILES Campaign.



“The school feels like one big family. Pupils are happy and and feel very safe. They enjoy lessons, work hard and behave well.”
Ofsted 2021



Parliament Hill School



Headteacher

Sarah Creasey

School address

Highgate Road, London, NW5 1RL

T: 020 7485 7077

E: enquiries@parliamenthill.camden.sch.uk

W: www.parliamenthill.camden.sch.uk

Ages 11 to 19

DfE number 202 / 4166

Places available September 2025

180

Open Evening

Thursday 26 September 2024,
5 to 7.30pm

Open Mornings

1, 2 and 8 October 2024, 9 to 10.30am

Sixth Form Open Evening

Thursday 28 November 2024, 5.30 to
8pm at William Ellis and Parliament Hill
Schools (pre-registration is required –
see the school website or www.laswap.camden.sch.uk)



School fact file

In May 2024, Parliament Hill had a full Ofsted inspection and we're delighted that the overall effectiveness of the school was judged to be 'Outstanding'.

We have a strong track record of excellent academic outcomes. GCSE results are well above local and national averages.

In 2023 Progress 8 score was 0.61 – well above average and placing us in the top 10% of schools nationally.

49% of grades were 9 – 7 top grades at GCSE.

We offer a rich, creative and academic curriculum, greatly enhanced by a wealth of extracurricular opportunities.

Students speak highly of the first-rate care for their wellbeing, provided by staff and specialist partners. In 2019, student wellbeing and mental health support was recognised as a Challenge Partners 'Area of Excellence'.



Mission

'High Achieving and Happy'

Our feminist mission is to enable every student to forge a strong identity, empowered to make their mark in the world.

We are proud to be a centre of excellence and innovation for girls' education.

We nurture aspirations and support each student to discover their dreams and ambitions.

We empower girls to take risks and to develop the confidence, leadership attributes, and cooperative relationships that enable them to flourish academically, socially and personally.

Students are educated to be inclusive global citizens, enabled to speak out, and make a positive difference to the world now and in the future.

We believe that achievement and happiness are inextricably linked and we are committed to enabling both.

Sarah Creasey (Headteacher)

Curriculum

Students at Parliament Hill have access to an inspiring, broad and balanced curriculum, which stimulates and engenders a passion for learning.

Our forward-thinking curriculum builds on students' achievements at Key Stage 2 and prepares them for post-16 and lifelong learning. There is a focus on developing excellent literacy and numeracy skills, as well as a keen emphasis on science, technology and mathematics. We have excellent specialist facilities to support learning in design, media and performing arts, as well as continually upgrading ICT facilities. Our teaching expertise extends across all subjects so students excel in science, languages and humanities as well as in creative areas.

Bright futures

As a result of our broad and balanced curriculum students gain, on average, nine GCSEs. We are proud to be a high-achieving school with a strong record of student progress and attainment in a range of subjects, which compares very well with leading schools nationally. Many of our subject results and value added scores are in the top five per cent for schools nationally.

The numbers of applicants going to university from our Sixth Form is above national averages, with over a quarter gaining places at Russell Group universities. Sixth Formers follow a tailored programme of higher education and careers advice and guidance.

Experience for life

Students benefit from a wide range of extracurricular activities, including regular drama productions, dance shows and music concerts. We have clubs ranging from trampolining to technology, creative writing to cooking and cheerleading to animation, plus a variety of sports.

There are many visits to museums, theatres and galleries and a strong programme of residential and field trips, adventure challenges and outdoor sports, as well as the extremely popular Duke of Edinburgh's Award scheme. Debating is thriving, with many of our students competing passionately in the National Debate Mate Cup.

"My daughter will leave Parliament Hill with an excellent rounded education and with tangible life skills that not many young people will have experienced."
Year 10 parent



PARLIAMENT HILL SCHOOL



Unique opportunities

As part of our commitment to raising students' aspirations and achievement, Parliament Hill School organises a full programme of work experience, mentoring, higher education visits, workshops and presentations in collaboration with our external partners, for example, Bennett architects, Deloitte, Camden Highline, the October Gallery, the British Library and prestigious universities such as Oxford, Cambridge, St George's Medical School, Imperial College, the Royal Veterinary College, London School of Economics and UCL. There are many opportunities for students to have genuine leadership roles.

For example, girls can:

- co-plan lessons with teachers.
- research current educational issues.
- sit on a student interview panel.
- run mini-workshops as lead literacy learners.
- be elected to the Student Council.
- host visitors, including international guests.
- Contribute to our student sustainability group.

Our outstanding pastoral provision includes therapeutic intervention through counselling and support for emotional wellbeing for students across the school. We have a designated wellbeing manager who co-ordinates provision across the school.

Sixth Form

Parliament Hill runs a very successful Sixth Form and is part of a long-standing partnership with our neighbouring boys' school William Ellis and local schools Acland Burghley and La Sainte Union. Together our four schools form the successful, well established LaSWAP Consortium, providing students with access to an extensive range of course options delivered by specialist teaching staff and complemented by excellent careers and higher education advice. We are proud of the success of our Sixth Form provision, confirmed by the high numbers of students who choose to stay with us at the end of Year 11, our exam results and the strong progression of students into prestigious universities and a wide range of careers.

Superb Facilities

We are very fortunate in being located on a beautiful site on the edge of Hampstead Heath, which provides a peaceful and secure environment for rich and stimulating learning experiences. Our new building was completed in summer 2019. Camden's £30 million community investment programme has greatly enhanced the school buildings and offers pupils additional extended learning opportunities. Our new facilities include a four-court sports hall, new science laboratories, computer science, design technology and wellbeing spaces and a remodelled library and dining hall. Together with significant refurbishment of the existing Morant and Performing Arts buildings, this is a fantastic new site for 21st century learning.

"The dedication, support, warmth, humour and fantastic teaching of all the teachers that my girls have had at Parli is incredible and overwhelming. I hope the teachers all realise the impact they have had on these girls... it's outstanding." Year 11 parent

Regent High School

School fact file

Winner of a 2022 Silver Pearson National Teaching Award for 'Making a Difference: Secondary School of the Year'.

Nominated for the 'Secondary School of the Year Award' in the TES Awards 2022.

Passport to the future: a flourishing Sixth Form with former students progressing on to King's College London, UCL, Queen Mary, University of London, SOAS, Royal Holloway, University of London and Central Saint Martins.

Thriving partnerships: membership of the King's Cross Knowledge Quarter and partnerships with organisations including Grimshaw Architects, The Francis Crick Institute, UCL, Central St Martins, The Roundhouse and the British Library.

Award-winning, state-of-the-art building: providing incredible facilities for the young people of Camden and beyond.



REGENT
HIGH SCHOOL

Headteacher

Gary Moore

School address

Chalton Street, London, NW1 1RX

T: 020 7387 0126

E: enquiries@regenthighschool.org.uk

W: www.regenthighschool.org.uk

Twitter: @RegentHighSch

Ages 11 to 19

DfE number 202 / 4196

Places available September 2025

180

Open Mornings

30 September to 4 October and 7 to 11

October 2024, starting at 9am

Sixth Form

Thursday 14 November 2024, 4 to 6pm

Welcome from our Headteacher

Welcome to Regent High School, a school where time is taken to get to know every child individually. Understanding our students' personalities, needs and passions is key to what we do, ensuring we can stretch capabilities, foster curious minds, develop talents and unlock potential.

Our nurturing and ambitious approach to education is underpinned by our school values of ambition, inspiration and opportunity. They steer our drive for academic excellence and a wider student experience that offers both the support and prospects for every student to develop into independent, confident and resilient adults, prepared for the demands of modern society.

I look forward to welcoming you and your family to Regent High School. Together we can support our students to achieve their very best.

Gary Moore, Headteacher



REGENT HIGH SCHOOL

Mission

Ambition / Inspiration / Opportunity

What ambition, inspiration and opportunity mean to us.

From the moment new students walk through our doors, they are emboldened by the culture of aspiration that defines the Regent High School experience.

Our culture fosters this sentiment by motivating us to provide inspirational experiences so that students can thrive at school and beyond.

By placing these values at the centre of all that we do, we fuel imaginations, stimulate minds, uncover talents and showcase the opportunities available in contemporary London.

As the first school member of the Knowledge Quarter, our many successful and varied partnerships with prestigious organisations prepare students for higher education, develop excellent employability skills and promote an

understanding of the global world of work.

Our Sixth Form also has an excellent track record of success. Former students have progressed on to higher education and into highly successful careers in medicine, law, teaching, journalism, architecture, finance and marketing.

Ofsted judged us to be good once more when they inspected the school in February 2023. The inspectors noted that Regent High School is 'the curriculum is broad and often exceeds what is expected nationally'.

We are also a school who values enrichment both within and outside of the curriculum. As an active Artsmark school we create opportunities for students to develop skills and talents such as music, art, coding and debate just to name a few.

"Pupils appreciate the rich range of visits and activities available to them."

Ofsted 2023

Curriculum

At the core of our work is our commitment to students that we will support them to achieve high levels of academic success. Our teaching is defined by bespoke strategies that challenge every student to realise their potential, enabling them to become successful, engaged and independent learners.

Our dynamic and enthusiastic specialist teachers deliver an innovative and personalised curriculum, with a clear focus on achievement in the core subjects that supports students' learning across all areas.

Students experience cultural and creative learning within and beyond the classroom. This is mirrored by an extensive range of opportunities to learn in science, technology, engineering, arts and mathematics subjects. Our students therefore have a solid experience and understanding of all of the STEAM subjects, which represent some of the most vibrant study and employment sectors in London and internationally.

As a school dedicated to inclusivity, we have a proven track record of working with all of our SEND and EAL students and their parents/carers to make sure they fulfil their potential. We are also home to the physical disability Resource Base for Camden.

Bright futures

Ensuring students are able to make informed decisions about their future is fundamental. Our Futures programme has been designed to play a pivotal role in our students' development. This is further enhanced by employer engagement opportunities in which students benefit from the opportunity to cultivate employability skills, gain a direct insight into career pathways, stimulate their independence and develop their career capital through real, hands-on experiences.

Progression on to higher education is excellent, with former students gaining places at King's College London; UCL; Goldsmiths, University of London; Queen Mary, University of London; Royal Holloway, University of London; SOAS, University of London; University of Nottingham; University of Sussex and Middlesex University. to study subjects ranging from Anthropology to Architecture, Criminology to Geography, and from Nursing to Psychology, among many others.

"Pupils behave well and are proud to come here."

Ofsted 2023

"Leaders consider what pupils have learned at primary school. They are ambitious in how they build on what pupils already know and can do." Ofsted 2023



Experience for life

Learning must extend beyond the classroom. Through a broad range of activities, we hope to provide our students with the social and cultural capital that will allow them to prosper in society.

We also believe that passionate people are inspired learners, which is why students are encouraged to take part in activities to supplement their studies. The breadth of our enrichment and Futures programmes allows for passions to be explored and skillsets expanded; whether it's sporting, creative or entrepreneurial, we really do have something for everyone (and if we don't, we listen to students' suggestions for further developing our extra-curricular programme). In addition, students in Years 12 and 13 are annually selected to be prefects, working alongside their elected counterparts on the School Council.

Unique opportunities

We pride ourselves on providing a co-ordinated seven-year journey, beginning with our primary liaison and transition programme that ensures students are settled and supported. Our transition team endeavours to visit every one of our feeder primary schools each summer, gaining as much knowledge as possible about our newest students, answering questions and enthusing the Year 6 pupils about the exciting journey ahead of them.

Our pastoral system supports students throughout their time at Regent High School. All students have focused tutor time sessions each day and weekly PSHE lessons with their dedicated tutor. Each year group is led by a Head of Year, and our pastoral system enables us to build excellent relationships with all students, parents and carers.

Our central London location means we are a centre of innovation and enterprise, while our ever-growing network of partners continues to be a resource in which we take great pride. This means that we are able to provide unique, inspiring and unrivalled opportunities for our students, parents/carers and staff.

Working in partnership with parents and carers is key to the support we provide to students. This was recognised in the awarding of the Leading Parent Partnership Award for a fourth time in 2020.



Sixth Form

We offer a rigorous Sixth Form journey.

Care and support are a vital element of a student's time at Regent Sixth Form. In our safe and nurturing environment, students are carefully guided from one key milestone to the next, supported to navigate their own individual pathways, take on positions of responsibility and

be ready to leave us well prepared to embrace the opportunities that come next. Whether it's university, an apprenticeship, work or a gap year, our team are experts in supporting students to achieve their ambitions.

“Sixth-form students are positive role models for younger pupils and readily provide support for their peers.”
Ofsted 2023

“My favourite thing about Regent High School is that the students and staff accept every student, no matter what. The school is very welcoming and teachers are always there if people need any support or advice. I'm very happy I chose to go to this secondary school.” Year 7 student

The UCL Academy



Interim Principal

Andrea Pomphrey

School address

Adelaide Road, London, NW3 3AQ

T: 020 7449 3080

E: enquiries@uclacademy.co.uk

W: www.uclacademy.co.uk

Ages 11 to 18

DfE number 202 / 4000

Year 7 places available

September 2025 192 (including 18 for Foundation students with Art Aptitude)

Foundation Open Evening

Thursday 3 October, 4.30 to 6.30pm

(please register via the Academy website: www.uclacademy.co.uk)

Foundation Open Mornings

12, 19 and 26 September 2024, 9 to 10.30am.

(please register via the Academy website: www.uclacademy.co.uk)

Sixth Form Open Evening

Thursday 7 November 2024, 4.30 to 6.30pm

(please register via the Academy website: www.uclacademy.co.uk)



School fact file

Sponsored by one of the world's top-ranking universities, University College London (UCL).

Strong learning culture with excellent, inspiring and imaginative teaching across the curriculum.

Emphasis on the education of the 'whole person' with specialist areas of Science, Engineering, Mathematics, Visual Arts and Languages.

18 Foundation places available in 2025/26 for students with an aptitude for the visual arts.

Introduction from the Principal

The UCL Academy is sponsored by UCL, one of the world's leading universities, with specialisms in Science, Technology, Engineering, Arts and Maths (STEAM) and languages. We are a centre of learning and a hub for the local community. UCL is a university founded to ensure access to education for all and was the first university in England to admit women. The UCL Academy therefore welcomes and supports students from all walks of life and is not a selective school.

We have worked with our sponsor to build an inspiring school which supports young women and young men to develop as individuals and to set and achieve high targets for themselves. Our students learn in state of the art facilities opened in 2012, which include a Science demonstration theatre, sports hall, an indoor and outdoor gym and a dance studio.

We are delighted to be offering 18 Foundation (Year 7) places for students with an aptitude for the Visual Arts from September 2020. These students will be supported with an exciting and innovative programme of study both internally and externally through our UCL links. Please visit our website for more information; the deadline for applications is Tuesday 24th September 2024.

The UCL Academy provides its students with an education that prepares them for global citizenship by:

- Supporting students to achieve 17 key experiences and opportunities by the age of 17 as part of our 17x17 programme
- Putting emphasis on both independent and collaborative learning, student choice and programmes of study which are tailored to individual interests, aspirations and progress
- Challenging the most able to strive for academic excellence and support all learners to fulfil their true potential as a young learner
- Giving each student mentoring support to ensure they make positive decisions about their academic career.

Thank you for your interest in The UCL Academy.

Andrea Pomphrey, Interim Principal

Mission

The UCL Academy is an exciting and inspiring place to learn, with high quality teaching and outstanding facilities. We offer:

- A strong and innovative learning environment with excellent, creative and imaginative teaching across the curriculum
- Opportunities for learners to make fully informed choices about their future direction
- Teaching that challenges the most able to strive for academic excellence and supports all learners to fulfil their true potential as a young learner
- A strong commitment to mentoring by staff, students and UCL undergraduates to ensure that every student is supported to achieve and thrive as an individual
- A safe, positive learning environment
- Access to the resources and expertise of our renowned university sponsor.

A major feature of The UCL Academy is **'education for global citizenship'**. We are committed to preparing students for the intellectual, social and personal challenges of their future lives and careers. Our curriculum and ethos shape students' understanding of their social responsibilities and what it means to be a global citizen. Students benefit from enhanced autonomy in curriculum choice and a wide variety of opportunities to determine what they study. In return, they are expected to maintain high standards of work and behaviour. Our self-directed curriculum engages students in a broad range of extracurricular activities.



Connected Curriculum

We offer a broad **Connected Curriculum**, every student studying at least one modern foreign language, one option being Mandarin. Our curriculum and teaching are stimulating and innovative, and enriched by our links with our prestigious sponsor, UCL. This, combined with an emphasis on high standards and behaviour, results in strong academic progress and attainment.

In their first year at the Academy, the Foundation Level students develop effective learning skills and identify their targets for future progress. As they progress through to Level 2 (Year 10), students are given a broad range of options for their GCSEs with expert guidance every step of the way.

Bright futures

- Curriculum specialisms – Science, Technology, Engineering, Art and Maths (STEAM) and Modern Foreign Languages
- English, the Connected Curriculum, and our education of the whole child, are recognised as areas of excellence
- Humanities, Performing Arts and Sport are vital aspects of the students' education. Our orchestra, choir, termly Drama performances and broad programme of sporting fixtures and clubs for elite and inclusive physical activities support students of all abilities, interests and backgrounds.
- High-quality facilities and connections to UCL's ethic of excellence with high academic standards
- Outstanding provision with input from university academics.



Technology

Technology has enriched the learning environment at the Academy in a myriad of ways. As well as providing teachers with more efficient ways of tracking the achievements of each and every student, it has given **all** students the greatest ever opportunity to excel in their education. The software we employ for study in the classroom and at home, which includes the use of AI Technology, is further enhanced by our excellent facilities; our Computer Science, Engineering and Physics faculties have at their disposal some of the most innovative technology being used in secondary schools. As the requirement to use computers on a deeper level continues to rise in many job sectors, we will continue to utilise and expand the technology that gives our students the most relevant tools to enter and succeed in further education and employment.

"UCL is one of the top universities in the UK. Sponsorship of an Academy allows us to provide access to new ways of learning for students and expose them to life at university, supporting students of all ability levels to higher levels of attainment and enthusiasm for further study."
Sponsor, University College London

“There is a relentless student view of the passion and enthusiasm shown by teachers who are regarded as people who go above and beyond in their support.”

Challenge Partners December 2021

Experience for life

- In 2018/19, the Academy launched the Critchley Scholars Programme for girls. Supported by Elizabeth Critchley, a UCL alumnus, this academic scholarship programme aims to **inspire and challenge** girls to achieve the highest academic excellence and prepare them for career success.
- Developing aptitude in specialisms: **Building confidence in STEAM** subjects and encouraging students to think independently.
- Internationalism: A focus on Modern Foreign Languages and the advantages/opportunities this may bring, including international trips and long-term career benefits.
- Working with external organisations: This prepares students for further education and the workplace. Our links with UCL bring many advantages, for example, visits to UCL, UCL student mentors for Level 1 (Year 8) and 3 (Sixth Form), Academy students, and guest UCL lecturers all contribute to raising aspirations and preparing students for life at university.
- Location: The Academy's central location offers students additional opportunities and experiences to raise aspirations, such as visits to local areas of educational interest and regular engagement with UCL.
- Careers advice and guidance: A range of enrichment opportunities designed to give students confidence in their own abilities and to provide them with the kinds of experience that employers and university admissions tutors will really value. The Academy's 17x17 programme works with students to help them achieve 17 core experiences and opportunities by the age of 17 ready for the next stage of their lives. It focuses on readiness for the university admissions process and ensuring students have the skills and knowledge

that will appeal to all future employers. It is central to our ethos of educating the whole child and our commitment to ensure that students at the Academy strive for academic excellence, through a connected curriculum that supports our students to become global citizens.

Unique opportunities

- Eighteen Foundation students with an aptitude for the Visual Arts will undertake an exciting and innovative programme of study both internally and externally through our UCL links.
- Students take early responsibility for their learning through a comprehensive extra curricular program of activities and opportunities.
- We support students to gain qualifications – but their successes in art, cultural activities, sport, music and community service are also celebrated.
- PE plays a vital role in the Academy, with a sports hall, an indoor and outdoor gym and a dance studio on site. Students have the opportunity to be part of the Sport Development Programme in Football and Basketball. For more information, please see the Sport section of the website.
- The Academy has state-of-the-art facilities for the teaching of STEAM subjects. This includes a science demonstration theatre which allows UCL academics and Academy staff to stage interactive experiments.
- Students have ‘encounters with excellence’ built into their educational experience. From their first day which they spend at UCL IOE's Bloomsbury campus, students at the Academy are exposed to and experience excellence throughout their school life. Whether through partnerships across all our subject faculties, through trips and visits to

London's leading cultural highlights or working with exceptional organisations in the fields of the performing arts, sport and STEAM, students at the Academy will be **inspired to achieve excellence** in whatever field of study they choose to take.

- The Academy's Chair of Governors is Lucie Green, Professor of Physics and a Royal Society University Research Fellow at the UCL Mullard Space Science Laboratory. As a female STEAM specialist, Professor Lucie Green is an inspiring role model for the students, particularly girls considering a career in STEAM.
- As a STEAM specialist school, the Academy's annual **STEAM Fest** gives students the opportunity to both showcase their research and learn more about careers in science from senior professionals, including events designed to get more girls into science.

Sixth Form

Our Sixth Form (we call it Level 3) has historically specialised in Science, Engineering and Maths and we have now developed excellent Arts and Humanities departments. This offers all students a broad academic experience. We have an aspirational ethos and high expectations, matched by excellent pastoral care and an inclusive atmosphere. Grades are important but so is leaving Sixth Form as a well-rounded and confident person.

We offer Post-16 students a **distinctive and stimulating curriculum**, complemented and enriched by an international perspective on their studies. Teaching is enriched by contributions from UCL's academics and students also benefit from access to the university's facilities. Since opening, an average of fifty percent of our Sixth Form students have been offered places at Russell Group universities. We are also proud of our student-led societies and the opportunities for leadership and volunteering that Sixth Formers have here.

William Ellis School

School fact file

William Ellis is a champion of boys' education, with a 160-year commitment to excellent teaching and learning and an enabling curriculum to ensure every student achieves their full potential.

We are concerned with the development of the whole person: intellectually, physically, emotionally, and socially. We emphasise the dignity of the individual, promote respect for others and recognise the opportunities and challenges of being a young man in a changing world.

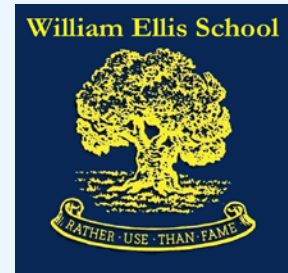
Our dedicated residential facility, in the Surrey Hills, provides activity camps and study trips to support personal development.

Our vision and aims

William Ellis School nurtures successful students and good citizens through strong relationships. We are a distinctive, dynamic, diverse school. We emphasise the dignity of the individual and promote respect for others.

We are a school where students:

- have ambition, work hard and make excellent progress
- feel supported, welcomed and respected for their individuality
- know their rights and responsibilities and are prepared to be responsible, global citizens in a democratic society
- possess an informed understanding of the world of work and how wealth is created, with an awareness of ethical behaviour, respect for the environment and social justice
- cultivate creative skills and an appreciation of art, music and drama
- develop an interest in the wider world and other cultures
- have pride in their school and have high expectations for themselves and their peers.



Headteacher

Izzy Jones

School address

Highgate Road, London, NW5 1RN

T: 020 7267 9346

E: info@williamellis.camden.sch.uk

W: williamellis.camden.sch.uk

Ages 11 to 19

DfE number 202 / 4688

Places available September 2025

112

Open evening

Thursday 26 September 2024, 6 to 8pm

Open mornings

30 September, 4 and 7 October 2024, 9 to 10.30am

Music Place Applications

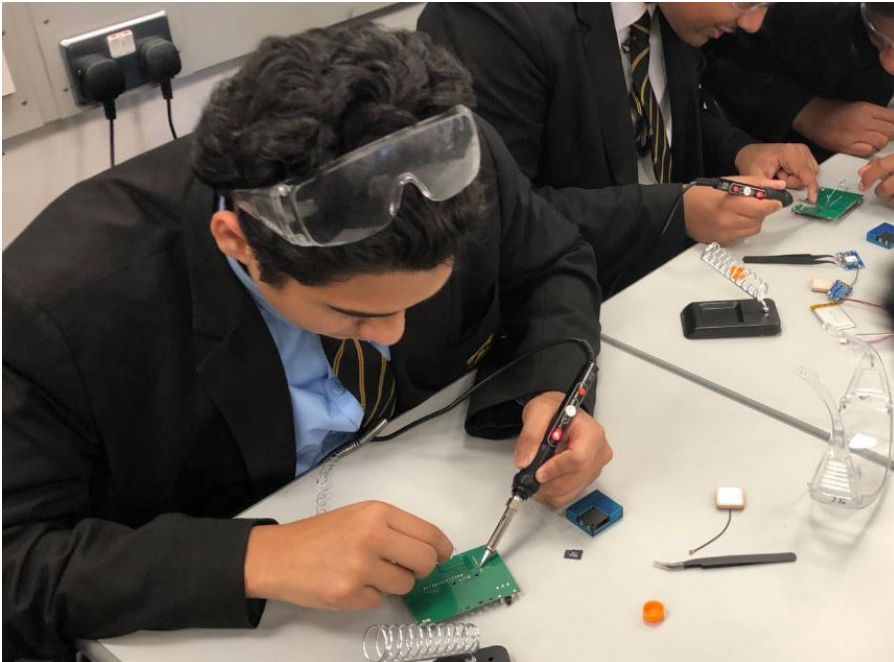
Applications to be submitted by 4pm, Tuesday 8 October. Music Aptitude Test 3.30pm on Thursday 10 October

Sixth Form evening

Thursday 28 November 2024, 5.30 to 8pm at William Ellis and Parliament Hill Schools (pre-registration is required – see the school website or www.laswap.camden.sch.uk)



"I applaud the ambition of the curriculum, and the ambition of creating well-rounded boys through the outward-bound nature of the school."
Parent, school survey 2022



Bringing out the best in boys

Our committed and highly-qualified teachers are experienced in bringing the best out in boys. We believe that boys achieve their full potential if they enjoy their work and find it stimulating and challenging. Courses are designed to assist each boy to achieve his personal best in terms of progress and academic achievement, and our Outdoor Education programme, an entitlement for all students, supports their growing independence and ability to work co-operatively with others.

We prepare our students for later life by developing independent learning skills and by exploring important issues through our comprehensive personal development programme.

"I like the inclusivity and the sense that each child is well known and valued."
Parent, school survey 2022

The house system provides more opportunities for student leadership. The five houses complement the pastoral care provided by our Pastoral Leaders and personal tutors in small tutor groups. The School Council, made up of elected student representatives, is influential in decisions about curriculum and use of resources and how the school's ethos is represented.

There are several strands to our Careers Education programme which is fully integrated into the curriculum for every year group. Future First, the national alumni network for state schools founded by William Ellis students, leads workshops and opportunities are also explored through projects and conferences with local and national businesses. All Year 10 boys have work experience and many attend university open days.

Transition

We want every boy to have the best transition to secondary school possible, we have a unique transition programme that is well regarded by parents and our local primary schools.

"William Ellis School has been a transformational experience for our son and for our family as a whole. From the first day, it was clear that teachers are deeply committed to education and get to know the students well, truly caring for their development."

Quote from a parent, 2024

Our curriculum

All boys follow a curriculum with a strong academic core but, as boys get older, they opt for different pathways reflecting their aptitudes and ambitions. We maintain flexibility, challenge and breadth. Our carefully designed non-examined curriculum includes PSHE and Careers Education to support the personal

development of our boys in Years 7 to 11, and all students in Years 12 and 13. We offer a range of science courses and triple science is a popular choice. We consider languages to be a crucial part of the curriculum and as such, most boys will study one foreign language to GCSE with some studying two. Some boys take vocational qualifications.

Life at William Ellis

Our philosophy is to provide a wide range of extracurricular opportunities and enrichment activities, particularly in music, dance, drama and sport, as well as residential trips in the UK and abroad. Such activities develop leadership and team working skills and characteristics such as resilience, creativity and resourcefulness. The school makes full use of its proximity to Hampstead Heath and to central London to facilitate these opportunities.

We foster participation and healthy competition through curricular and extracurricular sport, especially basketball and table tennis, and partnership with Arsenal Football Club. We encourage a variety of sports: rugby, football, athletics, cricket, tennis, badminton, basketball, cross-country running, table tennis and volleyball.

Music has a special place in the school. We have a large number of visiting specialist teachers. Applications from boys with an interest in music are encouraged: 10% of places are for boys with musical aptitude. Students' confidence and skills are developed through workshops and performances with organisations ranging from the Royal Academy of Music to the London Jazz Festival.

Outdoor learning is central to building strong relationships at William Ellis School. The Mill, our residential centre, set in 10 acres of the Surrey Hills, enables outward-bound activities, Duke of Edinburgh's Award training and study trips. All students participate in residential camps as part of our curriculum and we have a designated 'Head of Adventure' at the school. This helps our students to develop the attributes of successful students and good citizens.



Sixth Form

We run a highly-successful, co-educational Sixth Form with our neighbouring girls' school, Parliament Hill, housed in a new shared Sixth Form centre. Our joint Sixth Form is part of the popular, well-established LaSWAP consortium that also includes La Sainte Union and Acland Burghley schools. All four schools work together

to provide an extensive range of courses, run by specialist teaching staff and complemented by an excellent enrichment programme, as well as personalised careers advice. The success of our Sixth Form provision is confirmed by the excellent progression of students into prestigious universities and a wide range of careers.

"We consider ourselves very lucky that our son attends a school that takes such a proactive approach in respect of pupils' wellbeing. I know that this is not replicated in many other schools."
Quote from a parent, 2024.



Allocation of places in 2023 and 2024

The allocation of places for admission to Camden secondary schools for the previous two years are provided here. The table below details the cut off distances (measured in miles) beyond which applicants were initially not admitted when the offers were published in March 2023 and March 2024.

School	2024 (distances)	2023 (distances)
Acland Burghley School	0.93	0.85
Camden School for Girls Band A:	0.95	0.90
Band B:	0.91	1.06
Band C:	0.49	0.71
Band D:	0.36	0.36
Hampstead School	n/a	n/a
Haverstock School	n/a	n/a
La Sainte Union Catholic School	n/a	n/a
Maria Fidelis School FCJ	n/a	n/a
Parliament Hill School	1.14	1.17
Regent High School	1.49	1.63
UCL Academy	n/a	2.01
William Ellis School	n/a	2.17

n/a - These schools had vacant places when the offers were published.

Please remember that these are only guidelines and the final decision whether to make an application rests with the parent. You can check how far you live from a Camden school by visiting schoolsearch.camden.gov.uk/schools.

The table below details the number of places offered under the remaining criteria for the previous two years at the time offers were published.

School	No. places in 2024	Number of applications		Looked after children		EHCP allocations		Siblings		Social/medical	
		2024	2023	2024	2023	2024	2023	2024	2023	2024	2023
Acland Burghley School	178	593	628	3	1	12	2	40	41	0	0
Camden School for Girls	120	581	601	6	7	1	1	22	28	0	2
Hampstead School	210	431	476	1	1	0	2	39	63	1	1
Haverstock School	135	311	362	1	3	1	9	28	30	0	0
La Sainte Union	120	180	190	0	0	1	0	*	*	0	*
Maria Fidelis	150	358	348	0	0	5	1	*	*	5	*
Parliament Hill	180	663	624	2	3	6	0	21	31	3	2
Regent High	180	379	401	0	0	20	4	43	56	1	1
UCL Academy	192	512	660	0	1	4	3	35	62	0	0
William Ellis	130	313	371	0	1	2	1	14	28	5	0

* Please contact the school directly for this information

Other local authority contact details

Barnet Council

2 Bristol Avenue, Colindale, NW9 4EW
Telephone: 020 8359 7651
E: school.admissions@barnet.gov.uk
barnet.gov.uk

Brent Council

Brent Civic Centre, Engineers Way
Wembley HA9 0FJ
Telephone: 020 8937 3110
E: school.admissions@brent.gov.uk
brent.gov.uk

Ealing Council

Perceval House, 14-16 Uxbridge Road
Ealing, London W5 2HL
Telephone: 020 8825 5511
E: mainroundadmissions@ealing.gov.uk
ealing.gov.uk

Enfield Council

Civic Centre, Silver Street
Enfield EN1 3XA
Telephone: 020 8379 5501
E: esas@enfield.gov.uk
enfield.gov.uk

Hackney Education

Hackney Service Centre
1 Hillman Street, London E8 1DY
Telephone: 020 8820 7000 (option 3)
E: secondary.transfer@hackney.gov.uk
education.hackney.gov.uk

Hammersmith and Fulham Council

Admissions Team, 3rd Floor, 145 King
Street, Hammersmith, London W6 9XY
Telephone: 020 8753 1085
E: school.admissions@lbhf.gov.uk
lbhf.gov.uk

Haringey Council

Haringey Admissions Service
5th Floor, 48 Station Road
Wood Green, N22 7TY
Telephone: 020 8489 1000
E: schooladmissions@haringey.gov.uk
haringey.gov.uk

Islington Council

222 Upper Street, London N1 1XR
Telephone: 020 7527 5515
E: admissions@islington.gov.uk
islington.gov.uk

Kensington and Chelsea Council

Kensington Town Hall, Hornton Street
London W8 7NX
Telephone: 020 7745 6433
E: school.admissions@rbkc.gov.uk
rbkc.gov.uk

Lambeth Council

Lambeth Civic Centre
6 Brixton Hill, London, SW2 1EG
Telephone: 020 7926 9503
E: schooladmissions@lambeth.gov.uk
lambeth.gov.uk

Lewisham Council

2nd Floor, Laurence House
Catford Road, London SE6 4RU
Telephone: 020 8314 8282
E: secondaryadmissions@lewisham.gov.uk
lewisham.gov.uk

Southwark Council

PO Box 64529
London SE1P 5LX
Telephone: 020 7525 5337
E: schools.admissions@southwark.gov.uk
southwark.gov.uk

Tower Hamlets Council

Tower Hamlets Town Hall
160 Whitechapel Road
London E1 1BJ
Telephone: 020 7364 5006
E: school.admissions@towerhamlets.gov.uk
towerhamlets.gov.uk

Wandsworth Council

Town Hall, Wandsworth High Street
London SW18 2PU
Telephone: 020 8871 7316
E: admissions@wandsworth.gov.uk
wandsworth.gov.uk

Westminster Council

Hornton Street, London W8 7NX
Telephone: 020 7745 6433
E: schooladmissions@westminster.gov.uk
westminster.gov.uk

Useful contacts

Department for Education

Sanctuary Buildings, 20 Great Smith Street
London SW1P 3BT
Telephone: 0370 000 2288
gov.uk/dfe

Ofsted

Piccadilly Gate, Store Street
Manchester M1 2WD
Telephone: 0300 123 1231
E: enquiries@ofsted.gov.uk
ofsted.gov.uk

Independent Schools Council

First Floor, 27 Queen Anne's Gate
London SW1H 9BU
Telephone: 020 7766 7070
isc.co.uk

Local Government and Social Care Ombudsman

PO Box 4771, Coventry CV4 0EH
Telephone: 0300 061 0614
lgo.org.uk

The Office of the Schools Adjudicator

Bishopsgate House, Feethams
Darlington DL1 5QE
E: osa.team@schooladjudicator.gov.uk
education.gov.uk/schoolsadjudicator

Frequently asked questions about secondary schools

Does the co-ordinated admissions scheme improve my chances of getting a place at my preferred school?

Not necessarily. Camden schools are extremely popular and there are usually more applications than places available. Camden Council can only offer places up to the schools' published admissions number. Therefore you are advised to be realistic when choosing your preferences to have the best chance of securing a school place.

Do the Key Stage 2 test results for my child affect their chance of securing a school place?

The Key Stage 2 test results do not form part of the admissions criteria for any of Camden's community, voluntary aided schools or UCL Academy, so your child's results will not be considered.

Who determines a school's admissions criteria?

Camden Council determines the admissions criteria to be used when deciding who will be offered a place at any oversubscribed Camden community school and the voluntary aided schools have their own board of governors who decide their criteria. Each year a statutory consultation process takes place before the admissions criteria are determined.

Will my child receive support from an education psychologist if needed?

Educational psychologists provide specialist advice to support schools, colleges and early years providers to identify, assess and meet the needs of children and young people with special educational needs and disabilities (SEND) aged 0 to 25. We address concerns about developmental, behavioural, emotional and mental health needs, including those with the most complex needs. We draw on psychological theory and research to inform our practice. We work with parents and carers, teachers and other professionals to support children and young people. Referrals are made by a school's SENDCo or by staff in a college or early years setting.

What is the job of the pupil attendance service

This team works with schools and families to ensure that children attend school and to offer help and advice where appropriate. Parents should contact the school first but can also contact the pupil attendance service on 020 7974 7162.

How will I find out about my child's progress?

Schools maintain a progress record for each child and these are available for parents to see. Arrangements are usually made for parents to discuss the record each year with their child's teachers. When children transfer to secondary school, the record is passed on to the new school.

Is my child entitled to claim free school meals?

Once your child has a full-time school place you can apply for free school meals for them if you receive the following:

- Income support
- Income-based jobseeker's allowance
- Income-based employment and support allowance
- Universal credit with taxable income of less than £7,400 per annum
- Child Tax Credit with a taxable income of no more than £16,190 and not in receipt of Working Tax Credit*
- The guaranteed element of state pension credit
- Support from the National Asylum Support Service (NASS).

*Special circumstances: if receiving Working Tax Credit (WTC) you will not be entitled to free school meals unless you are still getting WTC because you have stopped work in the last four weeks; or reduced your hours to fewer than 16 in the last four weeks.

Young people in receipt of income support and income based jobseeker's allowance in their own right are also entitled to free school meals.

If you think your child is entitled to free school meals, it is very important that you apply for them even if your child eats a packed lunch. This is because the school receives extra funding from central government for every child eligible for free school meals.

Please contact your child's current school for more details or Camden's Free School Meals service on 020 7974 5771. To apply for free school meals please complete the online application form available from the Camden website, www.camden.gov.uk/fsm

Don't let your child miss out – every school day counts

Attending regularly is important for your child's happiness and success in school. We know that pupils with good school attendance – of 95% or more – are far more likely to achieve well in their primary school tests at age 11 and go on to gain good passes in their GCSEs at age 16.

Every day your child is not in school means that they are less likely than their classmates to do well in school.

We know that most parents and carers make sure their children attend regularly. Please support your child to go to school regularly. If you need help or advice, please speak to your child's school.

Is my child entitled to free school travel?

Children aged 11 to 18 can get free and discounted travel on all London transport services with a Zip Oyster photocard. To find out more and apply, visit tfl.gov.uk/fares/free-and-discounted-travel.

If you choose to send your child to a school further away when there is a school place nearer to your home, you must pay any travel costs incurred. If you think your child might have a serious medical, social or other reason why they would need transport to and from school, you should ask for your case to be given special consideration. If you think your child might have a right to free travel, or if you would like a copy of the policy, you should email admissions@camden.gov.uk or telephone the Camden Admissions Team on **020 7974 1625**.

Is there any other financial support for my child that I could apply for?

Parents should note that due to changes to funding arrangements, Camden Council is unable to provide clothing grants for school students or 16 to 19 maintenance grants for either school or college students. Post-16 students can contact their school or college for information about any available financial assistance. If you are in receipt of benefits, please seek further advice on financial assistance from the agency providing the benefits or contact Camden's Welfare Rights and Benefits Advice Centres. For information on how to contact these centres visit your local library or camden.gov.uk. You can also find a list of charities that may consider applications for help in buying a school uniform on the Camden Council website.

Will I need to buy any text books for my child?

Camden Council provides all books required for the curriculum, via the secondary schools.

Is there any other help with the cost of living?

You can find a range of help, advice and support for families who may be struggling during the current cost of living crisis at camden.gov.uk/costofliving



List of educational terms

Academies

Academies are state schools which receive their funding directly from the Government, rather than via the local authority. They are run by an academy trust. Visit gov.uk/types-of-school/academies to find out more.

Admissions criteria

The conditions set by the local authority for community schools, or the governing body for voluntary aided schools and academies that are used to decide who has priority for a place.

A Level

Advanced Level General Certificate of Education, a two-year course usually taken at the age of 17 to 18.

AS Level

Advanced Subsidiary General Certificate of Education, qualifications in their own right that will no longer contribute to A Levels.

BTEC

Vocational qualifications, providing a practical approach to learning, with skills development and theoretical knowledge.

Community schools

Built, maintained and staffed by the local authority, which is also responsible for admitting pupils.

Common Application Form

The form that you complete to make your application. This can be done online at www.eadmissions.org.uk or via a paper application obtained from the local authority of the borough in which you live and to whom you pay your Council Tax.

DfE

Department for Education, responsible for education and children's services.

English Baccalaureate (Ebacc)

Recognises where students have achieved five or more 5 to 9 grades (formerly A* to C) in traditional academic GCSE subjects: English, mathematics, sciences, a language and a humanities subject.

Free School

These are all-ability state schools set up independently from the local authority with the agreement of the government. Visit gov.uk/types-of-school/free-schools to find out more.

GCSE

General Certificate of Secondary Education, the main academic qualifications taken by 14 to 16 year-olds. GCSEs have been reformed and a new grading scale of 9 to 1 has been introduced, with 9 being the top grade. See gov.uk for more information.

Independent schools

Funded by fees paid by parents and income from investments, and responsible for setting their own curriculum and admissions policies.

Key Stage 3

The national curriculum taught during the first three years of secondary school, when students are aged 11 to 14.

Key Stage 4

The national curriculum incorporating GCSEs and other examinations, taught in Years 10 and 11 of secondary schools, when students are aged 14 to 16.

Local authority

The Council that is responsible for education in each area.

Looked-after children

A child who is, or has previously been, in the care of a local authority, either in foster care or a children's home, or a previously looked-after child who was adopted or subject to a child arrangement order or special guardianship order immediately following having been looked-after. This also includes previously looked after children who were in state care outside of England and ceased to be in state care as a result of being adopted.

National Curriculum

State secondary schools have to teach the following core subjects at Key Stage 3: English, mathematics, science, design and technology, computing, history, geography, modern foreign languages, art and design, music, citizenship, PE, RE and PSHE. Academies have greater freedom to design their curriculum but must include English, mathematics, science and RE. A new national curriculum was introduced in September 2014.

Ofsted

Office for Standards in Education, Children's Services and Skills. This is the independent government department responsible for inspecting schools and regulating services which care for children and young people and provide education and skills for learners of all ages.

Oversubscribed

When the number of applications for a school exceeds the number of places available.

Pan-London Scheme

A co-ordinated admissions scheme that allows the transfer of admissions applications between boroughs.

Parent

In this booklet the term parent includes carers and legal guardians.

Pastoral care

Arrangements for the welfare of individual pupils and the provision of the support which fosters all aspects of student learning and achievement.

Preference

A school named by the parents that they would like their child to attend. It is not always possible to meet parental preference.

Published Admissions Number

The number of children that a school will admit for a particular year group.

Special Educational Needs (SEN)

Children who have learning difficulties or disabilities that make it harder for them to learn or to access education than most children of the same age.

Subjects:

- ICT – information and communications technology
- PE – physical education
- RE – religious education
- PSHE – personal, social and health education
- STEAM – science, technology, engineering, arts and maths.

Voluntary aided school

A school owned and run by trustees (usually a religious body) and funded by the local authority. The governors are responsible for the provision of the premises, the maintenance of the school and the appointment and dismissal of staff. Voluntary aided schools are also responsible for their own admissions. However, parents still need to fill in a Camden common application form listing all schools they are applying for and, if an offer is received, it will come from the council. Some voluntary aided schools require parents to complete a supplementary form as well as the common application form.

Waiting list

The list held, for an oversubscribed school, of the children who did not get a place. As places become available, children are offered a place from the top of this list. The waiting list is held in order of the admissions criteria.

Work experience

A well-established programme where students in Years 10 to 11 spend two weeks in a work environment.

14 to 19 education

University Technical Colleges (UTCs)

Technical academies for 14 to 19 year-olds. UTCs have university and employer sponsors and combine practical and academic studies. They specialise in subjects that need technical, industry-standard equipment – such as engineering and construction – which are taught alongside business skills and ICT.

For further information, details of colleges in the London area and how to apply, please visit utcolleges.org

Studio Schools

Schools for 14 to 19 year-olds, backed by local businesses and employers. They often have a specialism but focus on equipping young people with a wide range of job-related skills and core academic qualifications, run in a practical and project-based way.

FE College

College for further education which offers provision for students aged 16 to 19 and some aged 14 to 16. Westminster Kingsway is Camden's only FE college.

This booklet is correct at time of going to press: August 2024.



Camden secondary schools' open events 2024

Parents and carers can find out more about Camden secondary schools and how to apply at school open events this autumn term.

These are a great way to find out more about the schools before applying. You can see all the dates and times on page 5 of this booklet or download a poster at camden.gov.uk/admissions (scan the QR code below).

These dates and times were correct at the time of this booklet going to print but please check the schools' websites and the Council's website for the latest details.



Find out more
and apply online
by scanning the
QR code.



**Camden schools:
Bright futures**



**DO YOU KNOW
SOMEONE WHO HAS
USED A FALSE ADDRESS TO
GET A SCHOOL PLACE?**

You do not need to tell us who you are. Please give us as much information as possible so that we can investigate the matter fully. If we find that a school place was obtained using a false address we will withdraw our offer and give it to the child who was entitled to the place. In such cases, we will withdraw our offer even after the child has started school.

You can report this to us confidentially via email: admissions@camden.gov.uk

**Email: admissions@camden.gov.uk
Website: camden.gov.uk/admissions**

