

# Maths

## Pre-entry to Entry 1

### Understanding numbers

Listening



For Pre-Entry to Entry 1 Learners

### Maths symbols

Matching



For Pre-Entry to Entry 1 Learners

## Entry 1 to Entry 2

### Magic numbers

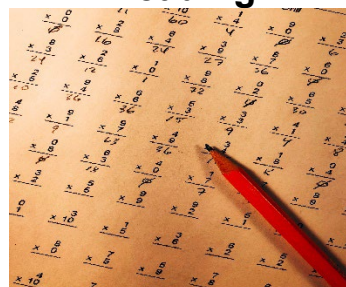
Game



For Entry 1 to Entry 2 Learners

### Word Problems

Reading



For Entry 1 to Entry 2 Learners

# CAMDEN AND ISLINGTON ESOL ADVICE SERVICE

## ESOL ACTIVITIES

Monday 7 March 2022

### Entry 2 to Entry 3

#### Facts and figures

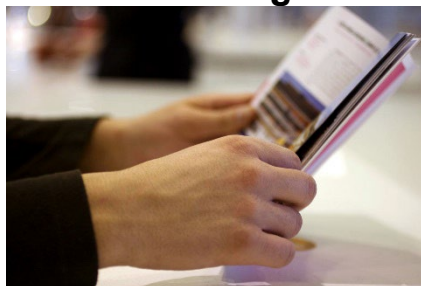
Listening



For Entry 2 to Entry 3 Learners

#### Course information

Reading

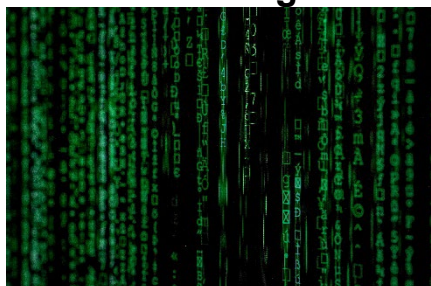


For Entry 2 to Entry 3 Learners

### Entry 3 to Level 1

#### Algorithms

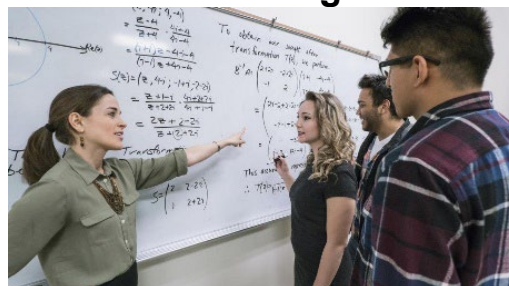
Listening



For Entry 3 to Level 1 Learners

#### Fibonacci Numbers

Listening



For Entry 3 to Level 1 Learners

CAMDEN  
020 7974 1618  
[esol@camden.gov.uk](mailto:esol@camden.gov.uk)  
[www.camden.gov.uk/esol](http://www.camden.gov.uk/esol)



ISLINGTON  
020 7974 1930  
[esol@islington.gov.uk](mailto:esol@islington.gov.uk)  
[www.islington.gov.uk/esol](http://www.islington.gov.uk/esol)



Supported by



Level 1 to Level 2

**Maths genius**

Video



For Level 1 to Level 2 Learners

**Alan Turing**

Reading



For Level 1 to Level 2 Learners

Useful links

**Health**

**GP appointments and bookings**

**NHS: 10-minute Workouts**

**Mental Health Helpline – Open 24 hours a day**

**Free Emergency Dentist:** Arrive at 6:30am, no appointment needed

**Help and information**

**Camden Cost of Living Support**

**Islington Cost of Living Support**

**Camden Digital Library:** Free eBooks and eAudio

**Islington Borrow Box:** Free eBooks and eAudio

**Citizens Advice - Housing**

**Find your local council:** Get help and information

**Free Legal Help:** For families with Children

**Barnet Refugee Service:** For Asylum Seekers and Refugees

**London Asylum Crisis Project:** For Asylum Seekers and Refugees

**Go to the next page for links to public services in Camden and Islington**

CAMDEN

020 7974 1618

[esol@camden.gov.uk](mailto:esol@camden.gov.uk)

[www.camden.gov.uk/esol](http://www.camden.gov.uk/esol)



ISLINGTON

020 7974 1930

[esol@islington.gov.uk](mailto:esol@islington.gov.uk)

[www.islington.gov.uk/esol](http://www.islington.gov.uk/esol)

# CAMDEN AND ISLINGTON ESOL ADVICE SERVICE

## ESOL ACTIVITIES

Monday 7 March 2022

### CAMDEN

#### Camden Council

- **Benefits and support**
- **Children, Families and Young People**
- **Education**
- **Crime and Safety**
- **Housing**
- **Coronavirus**

#### Camden libraries

#### Camden Early Help

#### Camden Employment Support

#### Citizens Advice

#### Using a food bank

**Independent food banks:** **Urban Community Projects / The Pantry / Queens Crescent**

---

### ISLINGTON

#### Islington - Advice

- **Free, independent advice on debt, benefits and housing**
- **Get help to manage your money**
- **Finding a home / Homelessness**
- **Resident support scheme**
- **Assistance for refugees and migrants**
- **Consumer advice – Protect yourself against scams**

#### Islington libraries

#### Islington Family Information Service

#### Islington Employment Support (iWork)

#### Help on your doorstep

#### Citizens Advice

#### Using a food bank

**Independent food banks:** **Ringcross Community / The Arc Centre / The Hive Foodbank**

CAMDEN

020 7974 1618

[esol@camden.gov.uk](mailto:esol@camden.gov.uk)

[www.camden.gov.uk/esol](http://www.camden.gov.uk/esol)



ISLINGTON

020 7974 1930

[esol@islington.gov.uk](mailto:esol@islington.gov.uk)

[www.islington.gov.uk/esol](http://www.islington.gov.uk/esol)

Supported by

