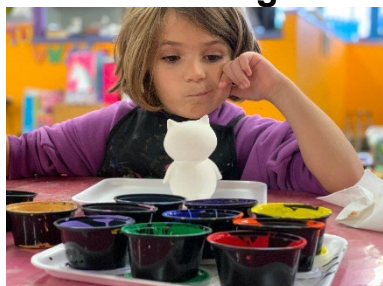


Everyday Life

Pre-entry to Entry 1

My Day Listening



For Pre-Entry to Entry 1 Learners

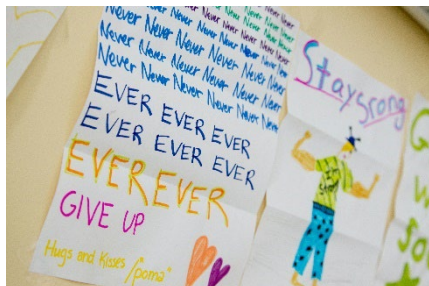
Daily Routine Reading



For Pre-Entry to Entry 1 Learners

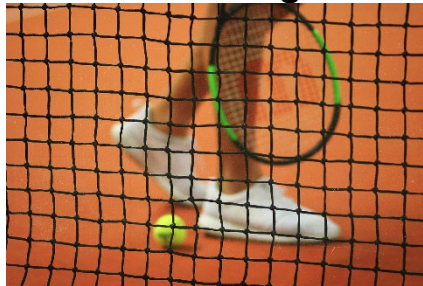
Entry 1 to Entry 2

Always or Usually? Grammar



For Entry 1 to Entry 2 Learners

Busy Daisy Listening

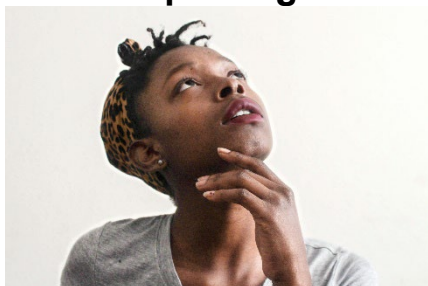


For Entry 1 to Entry 2 Learners

Entry 2 to Entry 3

What Do You Do?

Speaking



For Entry 2 to Entry 3 Learners

Your Work and Home

Listening

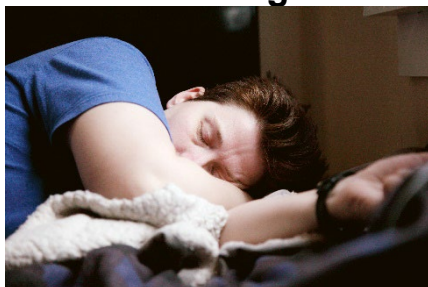


For Entry 2 to Entry 3 Learners

Entry 3 to Level 1

Sleep Cycles

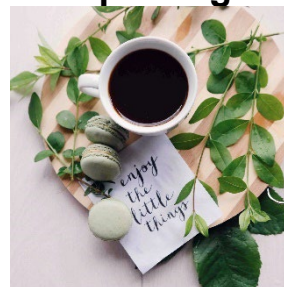
Reading



For Entry 3 to Level 1 Learners

Your Lifestyle

Speaking



For Entry 3 to Level 1 Learners

CAMDEN AND ISLINGTON ESOL ADVICE SERVICE

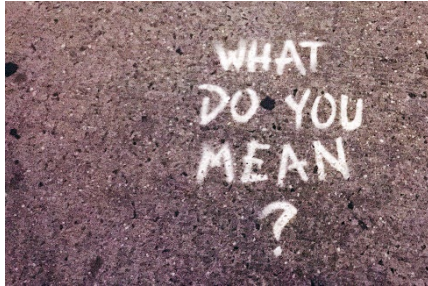
ESOL ACTIVITIES

Monday 29 November 2021

Level 1 to Level 2

What Is Your Question?

Grammar



For Level 1 to Level 2 Learners

Work/Life Balance

Reading



For Level 1 to Level 2 Learners

Useful links

Health

GP appointments and bookings

NHS: 10-minute Workouts

Free Emergency Dentist: Arrive at 6:30am, no appointment needed

Mental Health Helpline – Open 24 hours a day

Help and information

Camden Cost of Living Support

Islington Cost of Living Support

Camden Digital Library: Free eBooks and eAudio

Islington Borrow Box: Free eBooks and eAudio

Citizens Advice - Housing

Find your local council: Get help and information

Free Legal Help: For families with Children

Barnet Refugee Service: For Asylum Seekers and Refugees

London Asylum Crisis Project: For Asylum Seekers and Refugees

Go to the next page for links to public services in Camden and Islington

CAMDEN
020 7974 1618
esol@camden.gov.uk
www.camden.gov.uk/esol



ISLINGTON
020 7974 1930
esol@islington.gov.uk
www.islington.gov.uk/esol



Supported by
 ISLINGTON

CAMDEN AND ISLINGTON ESOL ADVICE SERVICE

ESOL ACTIVITIES

Monday 29 November 2021

CAMDEN

Camden Council

- **Benefits and support**
- **Children, Families and Young People**
- **Education**
- **Crime and Safety**
- **Housing**
- **Coronavirus**

Camden libraries

Camden Early Help

Camden Employment Support

Citizens Advice

Using a food bank

Independent food banks: **Urban Community Projects / The Pantry / Queens Crescent**

ISLINGTON

Islington - Advice

- **Free, independent advice on debt, benefits and housing**
- **Get help to manage your money**
- **Finding a home / Homelessness**
- **Resident support scheme**
- **Assistance for refugees and migrants**
- **Consumer advice – Protect yourself against scams**

Islington libraries

Islington Family Information Service

Islington Employment Support (iWork)

Help on your doorstep

Citizens Advice

Using a food bank

Independent food banks: **Ringcross Community / The Arc Centre / The Hive Foodbank**

CAMDEN

020 7974 1618

esol@camden.gov.uk

www.camden.gov.uk/esol



ISLINGTON

020 7974 1930

esol@islington.gov.uk

www.islington.gov.uk/esol



Supported by

