

COUNCILLOR SESSIONS 2024

Councillor Kemi Atolagbe: Surgery at QCCA, 3- 4pm, Second Tuesday of the month.
 Email: Kemi.Atolagbe@camden.gov.uk,
 Phone: 020 7974 2792

Councillor Nasrine Djemai: Surgery at Charlie Ratchford Court, 11am - 12pm,
 1st Saturday of every month.
 Email: Nasrine.Djemai@camden.gov.uk
 Phone: 020 7974 2792

Councillor Rebecca Filer: Surgery at Haverstock School, 6 - 7pm, Second Thursday of each month.
 Email: Rebecca.Filer@camden.gov.uk
 Phone: 020 7974 2792

There will be no councillor surgeries in August, these will restart in September.

WHAT'S HAPPENING IN YOUR AREA

Our Drop-in space at 104a Queens Crescent is open **Mondays, Wednesdays and Friday mornings**, with council staff, Wi-fi, information on the scheme and advice on your options.

Business owners, market traders, cafe & shopkeepers are invited to POP IN to 104a Queens Crescent every **Wednesday 1-4pm** to discuss your concerns during construction and how the redevelopment can benefit your business.

Queen's Crescent upgrade works

Large-scale works to begin improvements on Queen's Crescent are anticipated to begin on August 12.

Residents will have received information booklets through their door – additional copies can be found in the library or QCCA.

Construction updates from our contractors, Marlborough Highways, will be available here: marlboroughhighways.co.uk/location/queenscrescent/

CONTACTS

REPAIRS:

Report online via your Camden account or livechat at Camden.gov.uk/repairs or WhatsApp/SMS to 07360 277909

NEIGHBOURHOOD HOUSING OFFICER:

Bradley Rayner: 020 7974 1742
 Bradley.Rayner@camden.gov.uk

QR CODE

Scan with a smartphone to access our webpages with more information about the scheme



CONTACT DETAILS:

Rebecca Ellis: 0207 974 3878

Jamal Miah: 07958 476 110

Yasmin Chowdhury: 07879 636 783

Email: wkt@camden.gov.uk website: www.camden.gov.uk/wkt



WEST KENTISH TOWN ESTATE

NEWSLETTER: AUGUST 2024

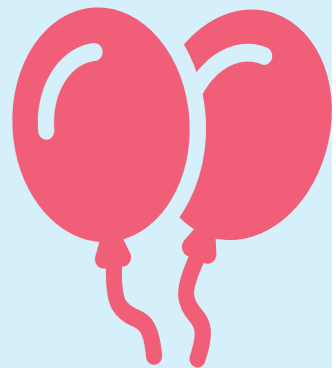
WKTE SUMMER FUNDAY

Saturday 7th September
 2024

12 - 4pm

Ball Court

Weedington Road



Free halal food (from 1pm-2.30pm for estate residents only)

Bouncy Castle Henna face painting activities for children

Latest news on building your new homes

Arts and crafts

Come along and join the redevelopment team for our annual summer fun!

FREQUENTLY ASKED QUESTIONS: VOIDS AND LEASEHOLDERS

Is it still intended that leaseholders will be housed in completely separate blocks on the new WKTE?

It is still the case that leaseholders will have separate communal areas due to the practicalities of service charge, maintenance arrangements etc. This does not necessarily mean "completely separate blocks". Due to phasing of the construction, current leaseholders may be offered properties in the first phase blocks coming forward, if necessary and desirable.

What provision is being made for leaseholders living in Milverton, affected by Phase 2?

Dedicated officers and leasehold specialists have approached all leaseholders in initial phases, are having conversations and are in negotiations with leaseholders in Phase 1 on a one-to-one basis to find solutions best suited to leaseholder wishes, needs and circumstances. There will be opportunities for leaseholders to move into the first phase if they wish to. We want to keep the community together and hope resident leaseholders will stay via the shared equity scheme.

What is happening with the empty properties on the estate?

You may have noticed properties becoming empty on the estate as residents in Phase 1 are choosing to move out and some of you have got in touch to ask about what will happen to these flats. Works are currently being carried out in these empty flats to get them to a better standard so they can be used productively.

We want to ensure that we are keeping residents up to date with the latest information on the project and answering any questions or concerns you may have. If there is a particular question or issue you would like more details on, please get in touch with us or visit us at our site office.

TALACARE COMMUNITY HEALTH EVENT

Yasmin and Jamal joined residents, officers and Camden's Mayor, Samata Khatoon, at the Talacare event organised by Camden's community health team.

The WKTE team had a stall at the event, where we spoke to the attendees and discussed our latest proposals to capture feedback. It was great to hear from other local residents and the Mayor's views on our redevelopment plans.



REOPENING ESTATE PARKING AND OUTCOME OF CPZ CONSULTATION

Following your feedback, we are pleased to announce that the 3 larger estate parking spaces in the middle of the estate have now been re-opened. This re-provides over 40 parking spaces across Edington, Durston and Chelwood parking areas. If residents would like to apply for a parking space they will need to complete the estate parking application by going on the Camden website and putting 'Estate Parking' in the search bar. If you need assistance or you have completed the form and not heard back, please contact Tali Sternfein on Tali.Sternfein@camden.gov.uk or 020 7974 4108 / 0797 3113 102.

Outcome from the Controlled Parking Zone Consultation

As a result of last year's consultation on the parking permit times on the streets around WKTE, the permit times have been temporarily increased around WKTE to align with the surrounding streets. Residents should look out for a postcard from the Street Parking team with further details on this. If you have any questions, please contact the team on 0207 974 4444.

TIMELINE

WE ARE HERE

* This timeline is indicative only

2024



January Priorities workshop



Estate Door knocking



Collating and Analysing Feedback



Estate Garages Demolitions



Eid and Easter Workshop with Young Residents



Steering Group Refresh Comms



September Funday



Presenting Planning application



Planning application Submitted



Planning Application Decision



Start on site to build

JANUARY

FEBRUARY

MARCH

APRIL

MAY

AUTUMN

EARLY 2025

SUMMER 2025

SUMMER 2026