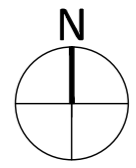


NOTE:
 THIS DRAWING HAS BEEN PRODUCED BY ELECTRONIC MEANS. SHOULD THE SCALE MEASUREMENTS BE TAKEN BY MEANS OTHER THAN ELECTRONIC (e.g. FROM A PRINTED COPY), THE FOLLOWING MUST BE TAKEN INTO CONSIDERATION BEFORE SCALING IS UNDERTAKEN:
 1. ENSURE THAT THE COPY HAS BEEN PRINTED/PLOTTED ON THE STATED SHEET SIZE WITH THE PLOTTING SCALE SET TO A CORRECT RATIO.
 2. ENSURE THAT AN ADEQUATE ALLOWANCE (DEPENDANT ON THE STATED SCALE) IS MADE FOR THE INEVITABLE DISTORTIONS INTRODUCED BY PLOTTING/PRINTING AND COPYING PROCESSES.
 3. MARKED CRITICAL DIMENSIONS ARE TO BE REGARDED AS HAVING PRECEDENCE OVER THE SCALED VALUES.



KEY	
	1 bed x 2 person flat
	2 bed x 3 or 4 person flat
	3 bed x 4 person flat [dual aspect]
	Circulation space
	Refuse, cycles, and ancillary spaces
	Commercial/retail space. [Total =approx. 1170m ² gja]



D	Access from Block 1 to courtyard revised. Duct shafts to A3 units shown.	21-06-16	BPH	CMR
C	Drawing status updated	29-04-16	HJL	CMR
B	Block 1 revised	26-04-16	HJL	CMR
A	Cycling storage provision numbers added	Mar 16	BPH	CMR
REV	DESCRIPTION	DATE	INIT	CHKD

21-06-16	BPH	CMR
29-04-16	HJL	CMR
26-04-16	HJL	CMR
Mar 16	BPH	CMR

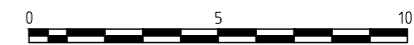
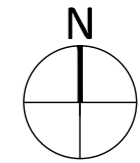


Client
 Create Streets Ltd.
 Project
 Mount Pleasant Circus
 Title
 Proposed lower ground floor plan

Scale 1:200@A2 Date 11.05.15 Drawn By HJL Checked By CMR Project No: K150248 Drawing No: A SK105 Revision D

St John's House 1a Knoll Rise Orpington Kent BR6 0JX
 01689 888222 orpington@calfordseaden.co.uk
 calfordseaden LLP is a Limited Liability Partnership Registered in England & Wales number OC315838
 ORPINGTON | LONDON | BIRMINGHAM | SOUTHEND-ON-SEA | WINCHESTER

NOTE:
 THIS DRAWING HAS BEEN PRODUCED BY ELECTRONIC MEANS. SHOULD THE SCALE MEASUREMENTS BE TAKEN BY MEANS OTHER THAN ELECTRONIC (e.g. FROM A PRINTED COPY), THE FOLLOWING MUST BE TAKEN INTO CONSIDERATION BEFORE SCALING IS UNDERTAKEN:
 1. ENSURE THAT THE COPY HAS BEEN PRINTED/PLOTTED ON THE STATED SHEET SIZE WITH THE PLOTTING SCALE SET TO A CORRECT RATIO.
 2. ENSURE THAT AN ADEQUATE ALLOWANCE (DEPENDANT ON THE STATED SCALE) IS MADE FOR THE INEVITABLE DISTORTIONS INTRODUCED BY PLOTTING/PRINTING AND COPYING PROCESSES.
 3. MARKED CRITICAL DIMENSIONS ARE TO BE REGARDED AS HAVING PRECEDENCE OVER THE SCALED VALUES.



KEY

	1 bed x 2 person flat
	2 bed x 3 or 4 person flat
	3 bed x 4 person flat [dual aspect]
	Circulation space
	Refuse, cycles, and ancillary spaces
	Commercial/retail space. [Total approx 1170m ² gia]



E	Access from Block 1 to courtyard revised, adjoining unit amended to suit. Duct shafts to A3 units shown.	21-06-16	BPH	CMR
D	Block 1 revised	25-04-16	HJL	CMR
C	General revisions.	Mar 16	BPH	CMR
B	Pedestrian route repositioned, blocks 4/5 rotated to break elevation and follow the curvature of Phoenix Place.	31.07.15	BPH	JFS
A	Commercial floor area added	14-05-15	HJL	CMR
REV	DESCRIPTION	DATE	INIT	CHKD



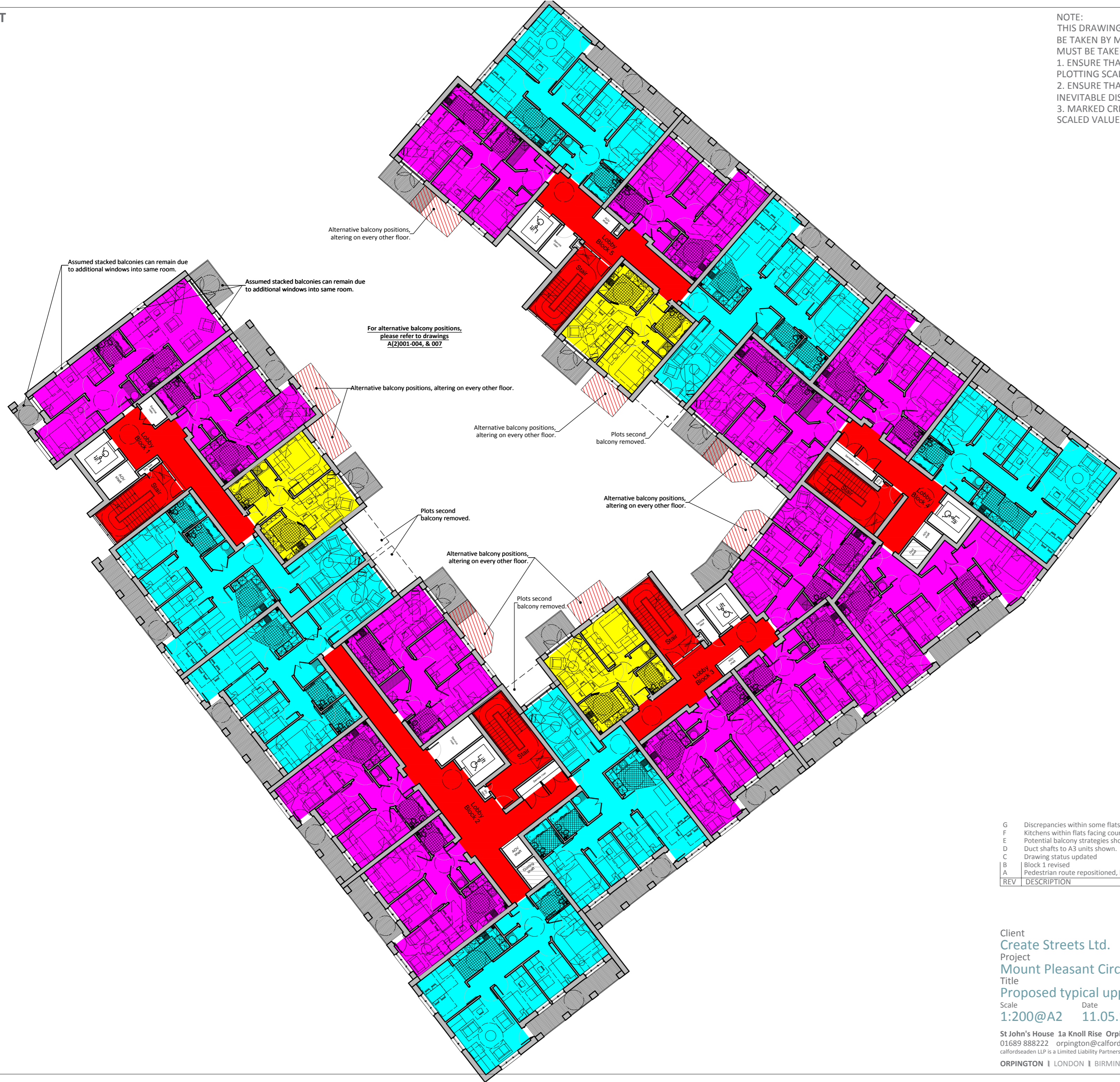
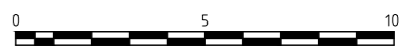
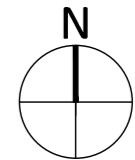
Client
 Create Streets Ltd.
 Project
 Mount Pleasant Circus
 Title
 Proposed street level plan
 Scale 1:200@A2 Date 11.05.15
 Drawn By HJL Checked By CMR

Project No: K150248 Drawing No: A SK106 Revision: E

St John's House 1a Knoll Rise Orpington Kent BR6 0JX
 01689 888222 orpington@calfordseaden.co.uk
 calfordseaden LLP is a Limited Liability Partnership Registered in England & Wales number OC315838
 ORPINGTON | LONDON | BIRMINGHAM | SOUTHEND-ON-SEA | WINCHESTER

NEIGHBOURHOOD PLANNING

NOTE:
THIS DRAWING HAS BEEN PRODUCED BY ELECTRONIC MEANS. SHOULD THE SCALE MEASUREMENTS BE TAKEN BY MEANS OTHER THAN ELECTRONIC (e.g. FROM A PRINTED COPY), THE FOLLOWING MUST BE TAKEN INTO CONSIDERATION BEFORE SCALING IS UNDERTAKEN:
1. ENSURE THAT THE COPY HAS BEEN PRINTED/PLOTTED ON THE STATED SHEET SIZE WITH THE PLOTTING SCALE SET TO A CORRECT RATIO.
2. ENSURE THAT AN ADEQUATE ALLOWANCE (DEPENDANT ON THE STATED SCALE) IS MADE FOR THE INEVITABLE DISTORTIONS INTRODUCED BY PLOTTING/PRINTING AND COPYING PROCESSES.
3. MARKED CRITICAL DIMENSIONS ARE TO BE REGARDED AS HAVING PRECEDENCE OVER THE SCALED VALUES.



KEY

	1 bed x 2 person flat
	2 bed x 3 or 4 person flat
	3 bed x 4 person flat [dual aspect]
	Circulation space
	Refuse, cycles, and ancillary spaces
	Commercial/retail space. [Total = approx 1170m ² gia]

G	Discrepancies within some flats regarding window positions revised.	07.09.16	BPH	JFS
F	Kitchens within flats facing courtyard internalised, reducing room depths. As recommended by daylight Engineer.	05.09.16	BPH	JFS
E	Potential balcony strategies shown to overcome daylight/sunlight deficiencies	25.08.16	BPH	JFS
D	Duct shafts to A3 units shown.	21-06-16	BPH	CMR
C	Drawing status updated	29-04-16	HJL	CMR
B	Block 1 revised	26.04.16	HJL	CMR
A	Pedestrian route repositioned, blocks 4/5 rotated to break elevation and follow the curvature of Phoenix Place.	31.07.15	BPH	JFS
REV	DESCRIPTION	DATE	INIT	CHKD

NEIGHBOURHOOD PLANNING



Client
Create Streets Ltd.
Project
Mount Pleasant Circus
Title
Proposed typical upper level plan

Scale: 1:200@A2 Date: 11.05.15 Drawn By: HJL Checked By: CMR Project No: K150248 Drawing No: A SK107 Revision: G

St John's House 1a Knoll Rise Orpington Kent BR6 0JX
01689 888222 orpington@calfordseaden.co.uk
calfordseaden LLP is a Limited Liability Partnership Registered in England & Wales number OC315838
ORPINGTON | LONDON | BIRMINGHAM | SOUTHBEND-ON-SEA | WINCHESTER

calfordseaden.co.uk