

CAMDEN AND ISLINGTON ESOL ADVICE SERVICE ESOL ACTIVITIES

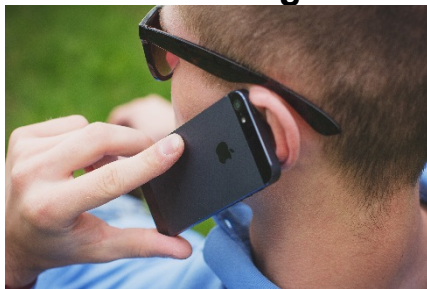
Tuesday 1 September 2020

Phone calls and emails

Pre-entry to Entry 1

Voicemail message

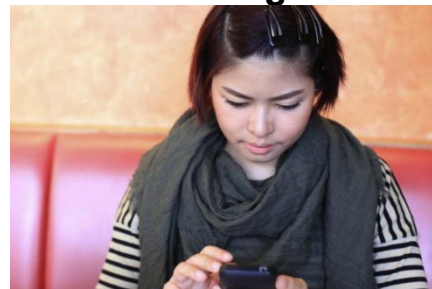
Listening



For Pre-Entry to Entry 1 Learners

Writing text messages

Writing



For Pre-Entry to Entry 1 Learners

Entry 1 to Entry 2

Understanding texts

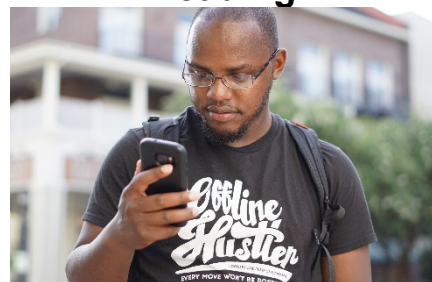
Reading



For Entry 1 to Entry 2 Learners

Cancelling plans

Reading



For Entry 1 to Entry 2 Learners

CAMDEN
020 7974 1618
esol@camden.gov.uk
www.camden.gov.uk/esol



ISLINGTON
020 7974 1930
esol@islington.gov.uk
www.islington.gov.uk/esol



Supported by
 ISLINGTON

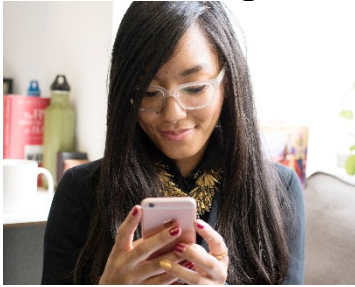
CAMDEN AND ISLINGTON ESOL ADVICE SERVICE ESOL ACTIVITIES

Tuesday 1 September 2020

Entry 2 to Entry 3

Invitation to a party

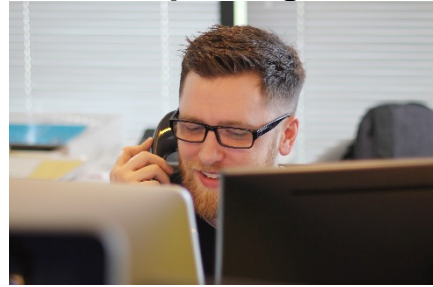
Listening



For Entry 2 to Entry 3 Learners

Leaving a message

Speaking



For Entry 2 to Entry 3 Learners

Entry 3 to Level 1

Planning an email

Writing



For Entry 3 to Level 1 Learners

Email etiquette

Writing



For Entry 3 to Level 1 Learners

CAMDEN
020 7974 1618
esol@camden.gov.uk
www.camden.gov.uk/esol



ISLINGTON
020 7974 1930
esol@islington.gov.uk
www.islington.gov.uk/esol



Supported by
 ISLINGTON

CAMDEN AND ISLINGTON ESOL ADVICE SERVICE

ESOL ACTIVITIES

Tuesday 1 September 2020

Level 1 to Level 2

Telephone pros and cons

Listening



For Level 1 to Level 2 Learners

Digital habits

Reading



For Level 1 to Level 2 Learners

Useful links

Health

GP appointments and bookings

Free Emergency Dentist: Arrive at 6:30am, no appointment needed

NHS: 10-minute Workouts

Mental Health Helpline – Open 24 hours a day

Help and information

Camden Digital Library: Free eBooks and eAudio

Islington Borrow Box: Free eBooks and eAudio

Citizens Advice - Housing

Find your local council: Get help and information

Free Legal Help: For families with Children

Barnet Refugee Service: For Asylum Seekers and Refugees

London Asylum Crisis Project: For Asylum Seekers and Refugees

Go to the next page for links to public services in Camden and Islington

CAMDEN
020 7974 1618
esol@camden.gov.uk
www.camden.gov.uk/esol



ISLINGTON
020 7974 1930
esol@islington.gov.uk
www.islington.gov.uk/esol



Supported by
 ISLINGTON

CAMDEN AND ISLINGTON ESOL ADVICE SERVICE

ESOL ACTIVITIES

Tuesday 1 September 2020

CAMDEN

Camden Council

- **Benefits and support**
- **Children, Families and Young People**
- **Education**
- **Crime and Safety**
- **Housing**
- **Coronavirus**

Camden libraries

Camden Early Help

Camden Employment Support

Citizens Advice

Using a food bank

Independent food banks: **Urban Community Projects / The Pantry / Queens Crescent**

ISLINGTON

Islington - Advice

- **Free, independent advice on debt, benefits and housing**
- **Get help to manage your money**
- **Finding a home / Homelessness**
- **Resident support scheme**
- **Assistance for refugees and migrants**
- **Consumer advice – Protect yourself against scams**

Islington libraries

Islington Family Information Service

Islington Employment Support (iWork)

Help on your doorstep

Citizens Advice

Using a food bank

Independent food banks: **Ringcross Community / The Arc Centre / The Hive Foodbank**

CAMDEN
020 7974 1618
esol@camden.gov.uk
www.camden.gov.uk/esol



ISLINGTON
020 7974 1930
esol@islington.gov.uk
www.islington.gov.uk/esol



Supported by
 ISLINGTON