

CAMDEN AND ISLINGTON ESOL ADVICE SERVICE ESOL ACTIVITIES

Monday 27 July 2020

English at Work

Pre-entry to Entry 1

Job Adverts

Reading



For Pre-Entry to Entry 1 Learners

Job Interview

Listening



For Pre-Entry to Entry 1 Learners

Entry 1 to Entry 2

Job Descriptions

Reading



For Entry 1 to Entry 2 Learners

A job in a supermarket

Reading



For Entry 1 to Entry 2 Learners

CAMDEN
020 7974 1618
esol@camden.gov.uk
www.camden.gov.uk/esol



ISLINGTON
020 7974 1930
esol@islington.gov.uk
www.islington.gov.uk/esol



Supported by
 ISLINGTON

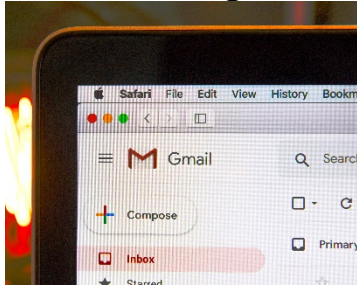
CAMDEN AND ISLINGTON ESOL ADVICE SERVICE ESOL ACTIVITIES

Monday 27 July 2020

Entry 2 to Entry 3

Email addresses

Writing



For Entry 2 to Entry 3 Learners

A job in a charity shop

Listening



For Entry 2 to Entry 3 Learners

Entry 3 to Level 1

Writing emails

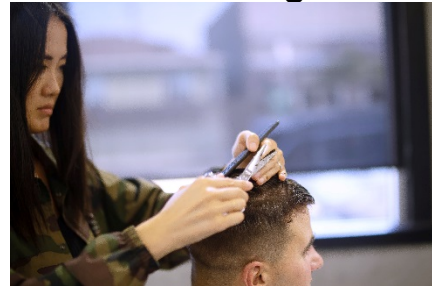
Writing



For Entry 3 to Level 1 Learners

Self-employment?

Listening



For Entry 3 to Level 1 Learners

CAMDEN
020 7974 1618
esol@camden.gov.uk
www.camden.gov.uk/esol



ISLINGTON
020 7974 1930
esol@islington.gov.uk
www.islington.gov.uk/esol

CAMDEN AND ISLINGTON ESOL ADVICE SERVICE

ESOL ACTIVITIES

Monday 27 July 2020

Level 1 to Level 2

On the phone at work

Speaking



For Level 1 to Level 2 Learners

Writing Your CV

Writing



For Level 1 to Level 2 Learners

Useful links

General and Business English

Business language to go

English at work – Listening series

BBC - Learning English

British Council – Learn English

Many Things in English

ESOL Courses Online – Beginner English

Learn My Way – Free digital skills courses

GCF Learn Free – ICT and other subjects

Policy in Practice – Understanding the benefits system

Supporting your child's learning – Information in 17 languages

Coronavirus information in your language

First Aid – British Red Cross / NHS

Mental Health Helpline – Open 24 hours a day

Go to the next page for links to public services in Camden and Islington

CAMDEN
020 7974 1618
esol@camden.gov.uk
www.camden.gov.uk/esol



ISLINGTON
020 7974 1930
esol@islington.gov.uk
www.islington.gov.uk/esol



Supported by
 ISLINGTON

CAMDEN AND ISLINGTON ESOL ADVICE SERVICE

ESOL ACTIVITIES

Monday 27 July 2020

CAMDEN

Camden Council

- **Benefits and support**
- **Children, Families and Young People**
- **Education**
- **Crime and Safety**
- **Housing**
- **Coronavirus**

Camden libraries

Camden Early Help

Camden Employment Support

Citizens Advice

Using a food bank

Independent food banks: **Urban Community Projects / The Pantry / Queens Crescent**

ISLINGTON

Islington - Advice

- **Free, independent advice on debt, benefits and housing**
- **Get help to manage your money**
- **Finding a home / Homelessness**
- **Resident support scheme**
- **Assistance for refugees and migrants**
- **Consumer advice – Protect yourself against scams**

Islington libraries

Islington Family Information Service

Islington Employment Support (iWork)

Help on your doorstep

Citizens Advice

Using a food bank

Independent food banks: **Ringcross Community / The Arc Centre / The Hive Foodbank**

CAMDEN

020 7974 1618

esol@camden.gov.uk

www.camden.gov.uk/esol



ISLINGTON

020 7974 1930

esol@islington.gov.uk

www.islington.gov.uk/esol

Supported by

