

# 16+ education, employment and training

November 2022



# VIRTUAL SCHOOL



## Virtual School - Unaccompanied Asylum Seeking Children (UASC) PEP Check-List

The Personal Education Plan meeting is a statutory requirement, held termly, for all Looked After Children between the ages of 3-18 years old. It describes the strengths, needs and aspirations of a Looked After Child and identifies the best ways of maximising the education provision in order to support them in achieving their goals. The aim of the PEP is to provide a record for young people and education which is continuous in detailing education, progress and attainment, barriers to learning, interventions, wherever the young person attends.

Promoting the education of looked-after and previously looked-after children - GOV.UK ([www.gov.uk](http://www.gov.uk)).

### Before is a checklist for planning for a Personal education Plan meeting for unaccompanied asylum seeking children.

- Translator booked in advance of meeting, ensuring correct dialect.
- Start of the PEP meeting confirm with the young person that there is an understanding with translator.
- Needs to discuss:
  - Happiness in location and placement
  - Course progression, attainment and attendance
  - Friendship group and associations
  - Specific future plans.
- Specific English practice in SMART Targets so that their level of English proficiency can be tracked for next PEP ie. practicing numbers, words, expressions.
- Determine level of motivation of becoming fluent in English and importance of English fluency for their career plans.
- Ensure young person has mental health needs met ie. CAMHS referral for trauma, Mind the gap.
- Ensure young person's physical health needs are being met ie. Dentist appointments, GP appointments.

## 16+ education, employment and training

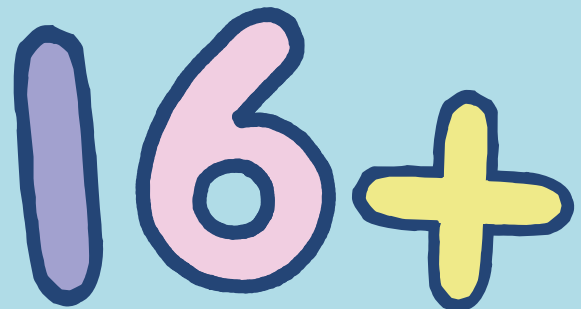
### What are my 16+ education, employment and training, (EET), options?

Young people are required to do one of the following until at least their 18th birthday:

- Stay in full-time education i.e. 16 hours per week at a college
- Spend 20 hours or more a week working or volunteering, while in part-time education or training
- An Apprenticeship – for more information visit Camden Apprenticeships web page, [www.camden.gov.uk/apprenticeships](http://www.camden.gov.uk/apprenticeships)

### Care Leaver information

All below EET information and Camden Finance for Care Leavers information is on our Camden Virtual School website, see below link:  
[www.camden.gov.uk/virtual-school-for-looked-after-children?inheritRedirect=true#wifw](http://www.camden.gov.uk/virtual-school-for-looked-after-children?inheritRedirect=true#wifw)





## Guidance on support and services:

The following education, employment and training, (EET), opportunities and communications are available for young people aged 16+:

### Financial support for care leavers 2020-21

[www.camden.gov.uk/documents/20142/13921075/Financial+support+for+care+leavers+2020-21.pdf/05bb0792-caaf-4b1c-f0c3-f116fe1d60f7?t=1](http://www.camden.gov.uk/documents/20142/13921075/Financial+support+for+care+leavers+2020-21.pdf/05bb0792-caaf-4b1c-f0c3-f116fe1d60f7?t=1)Virtual school 21601311898421

### Extending Personal Adviser support to all care leavers to age 25

[www.camden.gov.uk/documents/20142/13921075/Extending\\_Personal\\_Adviser\\_support\\_to\\_all\\_care\\_leavers\\_to\\_age\\_25.pdf/68e46689-9c66-f5ef-b563-87c8810d3ee8](http://www.camden.gov.uk/documents/20142/13921075/Extending_Personal_Adviser_support_to_all_care_leavers_to_age_25.pdf/68e46689-9c66-f5ef-b563-87c8810d3ee8)

### Services and support for care leavers

[www.camden.gov.uk/documents/20142/13921075/Services+and+support+for+care+leavers.pdf/25222965-c4d8-5339-e929-de90d9cc4c18](http://www.camden.gov.uk/documents/20142/13921075/Services+and+support+for+care+leavers.pdf/25222965-c4d8-5339-e929-de90d9cc4c18)

### Age 16 to 19 bursary fund guide for academic year 2020-to-2021

[www.gov.uk/guidance/16-to-19-bursary-fund-guide-2020-to-2021-academic-year](http://www.gov.uk/guidance/16-to-19-bursary-fund-guide-2020-to-2021-academic-year)

### Participation of young people in education, employment or training

[www.camden.gov.uk/documents/20142/13921075/Participation-of-young-people-in-education-employment-or-training.pdf/0cb362f7-b024-5745-7cbf-4d29aef08fcf](http://www.camden.gov.uk/documents/20142/13921075/Participation-of-young-people-in-education-employment-or-training.pdf/0cb362f7-b024-5745-7cbf-4d29aef08fcf)

### Apprenticeships

Based on individual needs and career interest.

<https://apprenticeships.camden.gov.uk/>

### Employment Support

[www.camden.gov.uk/jobs-skills](http://www.camden.gov.uk/jobs-skills)



# WELLBEING

## Other support available:

Care to Learn – Parents 20 years old and under, childcare funding

[www.gov.uk/care-to-learn](http://www.gov.uk/care-to-learn)

Childcare Grant – Parents studying full time higher education courses

[www.gov.uk/childcare-grant](http://www.gov.uk/childcare-grant)

### 16+ Education Provisions

Camden Rise – All Camden 6th forms and colleges

[www.camdenrise.co.uk/sixth-forms-and-colleges](http://www.camdenrise.co.uk/sixth-forms-and-colleges)

### SEND

Royal Free Hospital School

[www.royalfree.camden.sch.uk](http://www.royalfree.camden.sch.uk)

[www.royalfree.camden.sch.uk/attachments/download.asp?file=39&type=pdf](http://www.royalfree.camden.sch.uk/attachments/download.asp?file=39&type=pdf)

Alexandra Centre Camden (16-25 years old)

[www.camden.gov.uk/alexandra-centre](http://www.camden.gov.uk/alexandra-centre)

[www.westking.ac.uk/about-us/our-centres-and-locations/alexandra-centre](http://www.westking.ac.uk/about-us/our-centres-and-locations/alexandra-centre)

Camden Society

[www.thera.co.uk/about/companies/the-camden-society-changes](http://www.thera.co.uk/about/companies/the-camden-society-changes)



### Social Emotional Wellbeing

The Brandon Centre

<https://brandon-centre.org.uk>

Tavistock and Portman

<https://tavistockandportman.nhs.uk>

The Hive

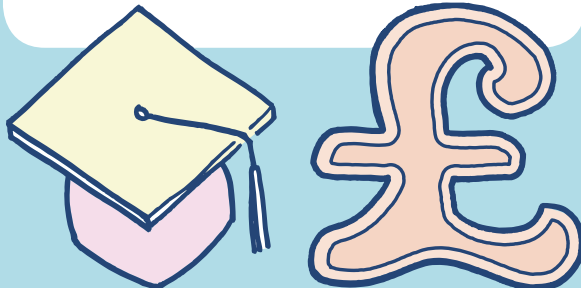
[www.catch-22.org.uk/services/the-hive](http://www.catch-22.org.uk/services/the-hive)

ICOPE

[www.icope.nhs.uk](http://www.icope.nhs.uk)

Camden Rise

[www.camdenrise.co.uk/emotional-wellbeing](http://www.camdenrise.co.uk/emotional-wellbeing)



## Alternative Provisions

### WAC Arts (5-26 years)

<https://reports.ofsted.gov.uk/provider/22/141164>

[www.wacarts.co.uk](http://www.wacarts.co.uk)

### The Hive (16-24 years)

[www.catch-22.org.uk/services/the-hive](http://www.catch-22.org.uk/services/the-hive)

### CCfL (up to 16 years)

<https://reports.ofsted.gov.uk/provider/25/100092>

[www.ccf.camden.sch.uk](http://www.ccf.camden.sch.uk)

### Working Men's College (19+ years only)

[www.wmcollege.ac.uk](http://www.wmcollege.ac.uk)

[www.wmcollege.ac.uk/about-us/inspection-and-reviews](http://www.wmcollege.ac.uk/about-us/inspection-and-reviews)

### Soundskool

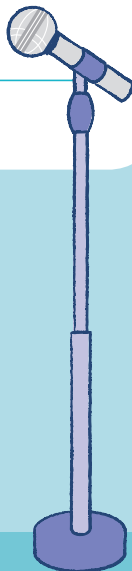
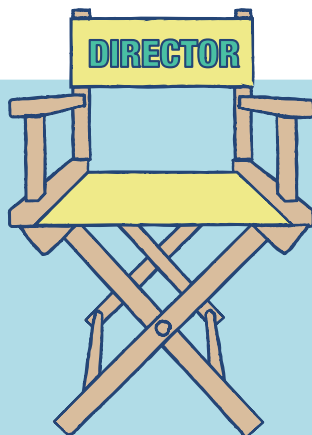
[www.soundskool.co.uk/our-courses](http://www.soundskool.co.uk/our-courses)

### Saba UK Unsigned Performance and Education Ltd

[www.ukunsignededucation.org/courses](http://www.ukunsignededucation.org/courses)

### Skills Training

[www.skillstraininguk.com](http://www.skillstraininguk.com)



## Other support available:

### The Avalon Project

[www.avalonproject.co.uk](http://www.avalonproject.co.uk)

### Roundhouse

[www.roundhouse.org.uk/about-us/our-work-with-young-people](http://www.roundhouse.org.uk/about-us/our-work-with-young-people)

### City Lit

[www.citylit.ac.uk](http://www.citylit.ac.uk)

[www.citylit.ac.uk/blog/city-lit-celebrates-good-outstanding-features-ofsted](http://www.citylit.ac.uk/blog/city-lit-celebrates-good-outstanding-features-ofsted)



## Training and Employment continued

### The Winch (4-25 year olds)

[www.discoveradventure.com/charities/the-winch-the-winchester-project](http://www.discoveradventure.com/charities/the-winch-the-winchester-project)

### Good Work Camden Job Hub

[www.camden.gov.uk/employment-support](http://www.camden.gov.uk/employment-support)

### Camden Apprenticeships

[www.camden.gov.uk/apprenticeships](http://www.camden.gov.uk/apprenticeships)

### KX Recruit

[www.kxrecruit.co.uk/candidates](http://www.kxrecruit.co.uk/candidates)

### REED Employment

[www.reed.co.uk/jobs/apprenticeships-jobs-in-camden-town](http://www.reed.co.uk/jobs/apprenticeships-jobs-in-camden-town)

### Aspire: Drive Forward

<https://driveforwardfoundation.org/early-intervention-aspire/>

### YMCA Training Courses | Central YMCA

[www.ymca.co.uk/education-training](http://www.ymca.co.uk/education-training)

### College of Beauty Therapy

[www.lcbt.co.uk](http://www.lcbt.co.uk)

### Youth Project

<https://www.mamayouth.org.uk/training>

### British Film Institute

[www.bfi.org.uk/bfi-film-academy-opportunities-young-creatives/courses/bfi-film-academy-specialist-courses](http://www.bfi.org.uk/bfi-film-academy-opportunities-young-creatives/courses/bfi-film-academy-specialist-courses)

### The Big House

<https://thebighouse.uk.com>

### Prince's Trust

[www.princes-trust.org.uk/help-for-young-people](http://www.princes-trust.org.uk/help-for-young-people)

## Education Provision including ESOL

### and Adult Learning

### UCL Academy – KS5 Level 3 courses

<https://uclacademy.co.uk>

### Camden ACL (Adult Community Learning)

[www.camdenrise.co.uk](http://www.camdenrise.co.uk)

[www.camden.gov.uk/adult-community-learning](http://www.camden.gov.uk/adult-community-learning)

[www.camden.gov.uk/acl-whats-on](http://www.camden.gov.uk/acl-whats-on)

[www.camden.gov.uk/online-learning-resources#dluc](http://www.camden.gov.uk/online-learning-resources#dluc)

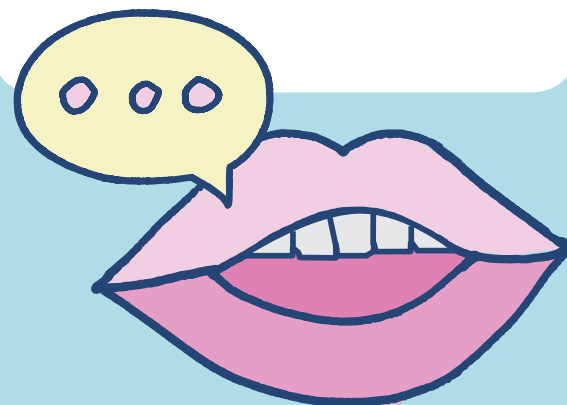
### Mary Ward Centre

<https://reports.ofsted.gov.uk/provider/31/130404>

[www.marywardcentre.ac.uk](http://www.marywardcentre.ac.uk)

### Westminster Adult Education Service

<https://www.waes.ac.uk>



# 6 STEPS

of  
ESOL  
Levels

## STEP

# 1

### PRE ENTRY LEVEL

With very little or no English at all.



Speaking and Listening skills

- Can say single words up to 3 or 4.



Reading and Writing skills

- Read or write up to 3-4 words or can't read or write at all.

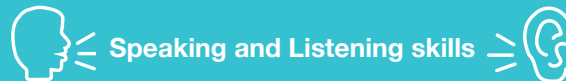


## STEP

# 2

### ENTRY LEVEL 1

Beginning to make short sentences with up to 5-6 words.



Speaking and Listening skills

- Beginning to understand and talk about personal information.



Reading and Writing skills

- Beginning to read or write basic information about themselves.
- Can fill in a simple form.

## STEP

# 3

### ENTRY LEVEL 2

Can understand better and communicate with others in simple sentences.



Speaking and Listening skills

- Developed basic everyday speaking – listening skills.
- Ask questions at shops – doctor, school etc.



Reading and Writing skills

- Developed basic reading and writing skills.
- Could read or write simple letters, stories, signs, instructions.



## STEP

# 4

## ENTRY LEVEL 3

Have more confidence and vocabulary – can understand and respond accordingly.  
Still need to work on grammar and sentences structure.

### Speaking and Listening skills

- Can better deal with everyday tasks.
- Make an appointment on the phone - talk to the teachers, doctor, shops etc.
- Still need to work on grammar and sentences structure.

### Reading and Writing skills

- Can read and comprehend leaflets, letters, stories.
- Can write simple formal letter, story.
- Still need to work on sentences structure, spellings and grammar.



## LEVEL 2

For a lot of jobs, you need a recognised qualification in English at Level 1 or 2.  
Basic IT Skills.  
Developing employability skills.

### Speaking and Listening skills

- Developing employability related language skills and confidence.
- Practise vocabulary, grammar and sentences structure.

### Reading and Writing skills

- Practise reading for specific information.
- Practise writing variety of texts.
- Practise spellings, vocabulary, grammar and sentences structure.





# JOBS

## Other support available:

### Mainstream College

Westminster Kingsway College

[www.westking.ac.uk](http://www.westking.ac.uk)

<https://files.api.ofsted.gov.uk/v1/file/912135>

### Careers Advice

Connexions and Careers Service - Camden

<http://cindex.camden.gov.uk/kb5/camden/cd/service.page?id=mPKD7ONNMHc>

Camden Rise – Careers Drop in

[www.camdenrise.co.uk/careers-and-connexions](http://www.camdenrise.co.uk/careers-and-connexions)

### Outside of Camden

City and Islington College

[www.candi.ac.uk](http://www.candi.ac.uk)

<https://files.api.ofsted.gov.uk/v1/file/2551113>

City of Westminster

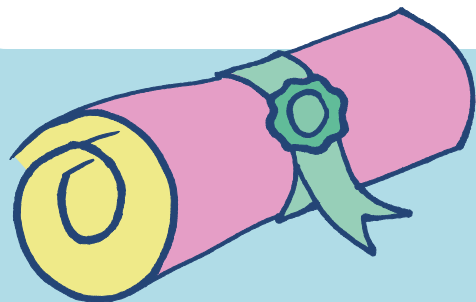
<https://reports.ofsted.gov.uk/provider/31/130423>

[www.cwc.ac.uk](http://www.cwc.ac.uk)

ELLAT (ESOL)

[www.elatt.org.uk](http://www.elatt.org.uk)

<https://files.api.ofsted.gov.uk/v1/file/2455781>



Please speak with your Social Worker or Personal Advisor regarding support to complete EET applications or referrals.

## Other support available:

Please direct any 16+ education, employment and training queries to **Mary Holder** - Deputy Head of Camden Virtual School or **Prince Fitzritson** - Post 16 Inclusion Worker.

Mary provides 16+ education, employment and training, support and guidance for young people aged 16 years up to 21 years.

email: [Mary.Holder@camden.gov.uk](mailto:Mary.Holder@camden.gov.uk)  
Tel: 0207 947 2768

Prince Fitzritson, Virtual School Post 16 Inclusion Worker Children Schools and Families.

Tel: 020 7974 1221 Mb: 07766 134089

